



1932



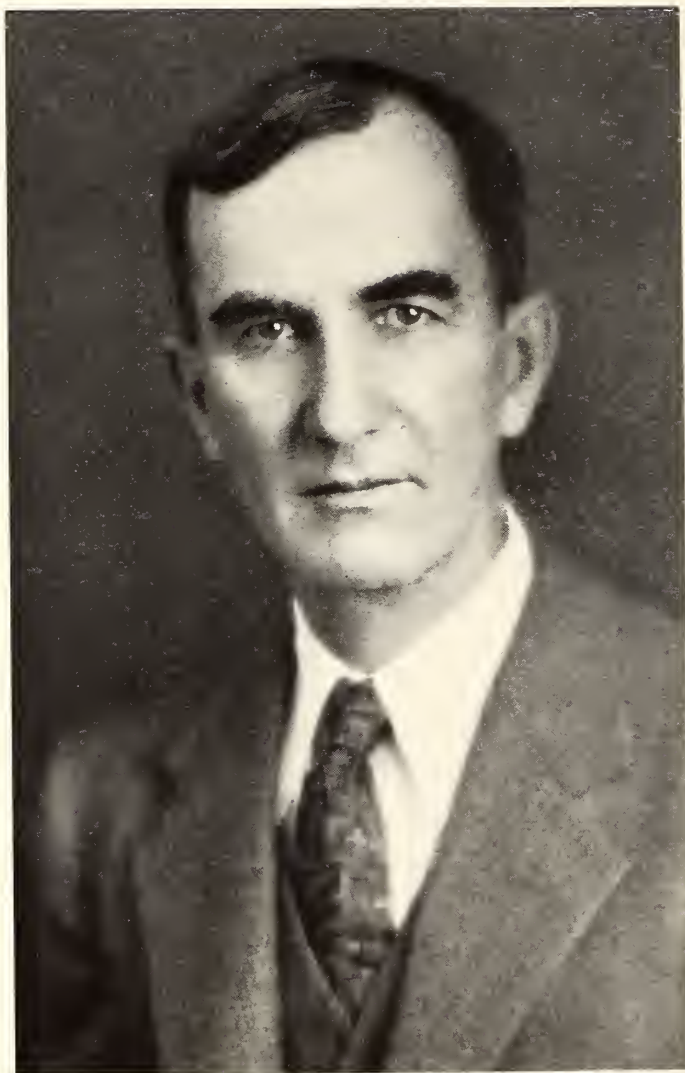
Digitized by the Internet Archive
in 2015

<https://archive.org/details/millidek2919jame>

The
MILLIDEK
Volume XXIX



Published by the
SENIOR CLASS
of 1932
THE JAMES MILLIKIN UNIVERSITY
DECATUR



Fred Delzell Townsley

For his generous confidence in students,
for his kindly stimulation in the search
for knowledge; for his scientific skill and
affectionate zeal; the Senior Class of the
James Millikin University, with senti-
ments of deepest admiration and respect,
dedicate this 1932 Millidek

to

FRED DELZELL TOWNSLEY

THE STAFF OF THE 1932 MILLIDEK



Jonquet, Cole, Cope, Rowe, Starr, Griswold, Corley

Sayre, Trow, Lamar, Bean, Black, Staley

Radford, Klunder, Wilson, Levinson, Timm, Requarth, Bell, Waddell

Wilmer Lamar.....*Editor*

Kenneth Corley.....*Business Manager*

Dauida McCaslin.....*Faculty Counselor*

Board of Editors

Amherst Hardy Marion Trow
Eugene Jonquet Lois Waddell

Art Editors

Frances Wilson Richard Cole
Robert Cope Dorothy Klunder
Gwendolyne Burgess

Classes

Vivian Bell Lois Sayre

Athletics

Walter Griswold Virginia Maxey

Organizations

Marna Radford Marjorie Schluntz

Business Staff

Ward Black Charlene Levinson
Thomas Bean Marjory Powers
Hillis Staley Richard Kinnaman
Harry Hood William Ballinger
Wellman France Jean Timm
Bernice Larrick Marion Vincent
Otto Schlachter Margaret Schiwek
Lucille Michaels Pauline Requarth



*"The steps to learning's height
Wherefrom we view the world in golden light."*



*"There is no frigate like a book
To take us lands away."*



*"Be still, while music rises about us; the deep enchantment
Towers, like a forest of singing leaves and birds,
Built for an instant by the heart's troubled beating
Beyond the power of words."*



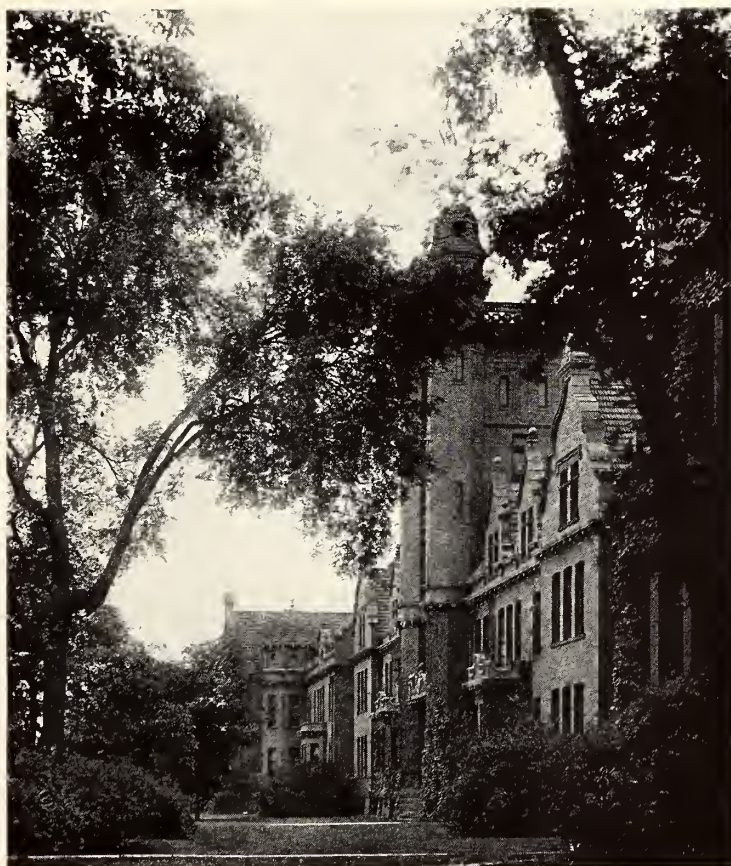
"Friendship is the shadow of the evening, which strengthens with the setting sun of life."



"Friendship is fit not only for serene days, and graceful gifts and country rambles; but also for rough roads, and hard fare, shipwreck, poverty, and persecution."



*"Beauty of the heart
Is evident in temples. But it breathes
Alive where athletes quicken curly wreaths. . ."*



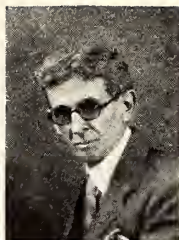
*"A nation of men shall rest beneath its shade
And it shall protect them all,
Hold everyone safe there, watching aloof in silence."*



Jesse Hayes White, Ph.D.
President



Earl Everett Warner,
M.A.



Albert Taylor Mills,
A.M.



James Albert Melrose,
Ph.D.



Edward S. Boyer,
Ph.D.



Quincy Guy Burris,
Ph.D.



Davida McCaslin,
A.M.



Leroy C. McNabb,
M.A.



Jay B. MacGregor,
Ph.D.



Lucille Margaret Bragg,
A.M.



Isabella T. Machan,
A.M.



James Harvey Ransom,
Ph.D.



John C. Zimmerman,
Ph.D.



Rayen Welch Tyler,
M.A.



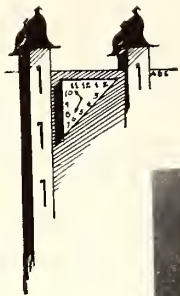
Fred D. Townsley,
A. M.



William Paul Dallmann,
M.A.



Bonnie R. Blackburn,
A.M.



Oscar Tauber,
M.S.



Frederick Charles Hottes,
Ph.D.



Florence Royce



Lavina W. Hess,
B.S.



Leo Johnson



Bobbie Lucille Corder,
A.B.



Russell Wayne Gill,
A.B.



Katherine B. Davis,
A.B.



Dorothy A. Bell,
A.B.



Olive Minerva Young,
A.B.



Elizabeth Campbell,
M.A.



Christine R. Pensinger,
B.S.



Eugenia Allin,
B.L.S.



Jay Leslie O'Hara,
Ph.D.



W. St. Claire Minturn



Ruth Walters



Miner Walden Gallup



Carl Head,
B.S.



Earl Chester Kiefer,
M.S.



Emil J. Amelotti,
M.S.



Doris Lyons Smallwood,
B.S.



Wilna Moffett,
B.S.



Stella Mae Chittum,
B.M.



Janice Meredith,
A.B.



Louise Watson Helmick



Velma Davis,
A.B.



Gertrude Munch



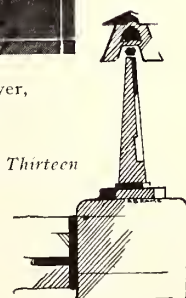
Clarence Earl Deakins,
B.S.



Esther Gard Rhoades,
B.S.



Calvert Welch Dyer,
A.B.

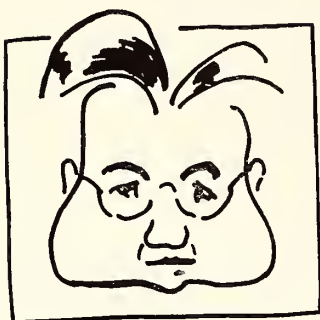




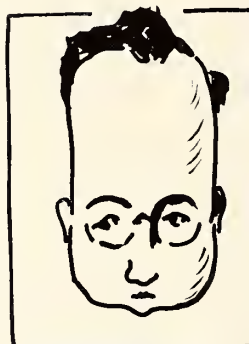
Dr. White



Mc Caslin



Dyer



Robinson

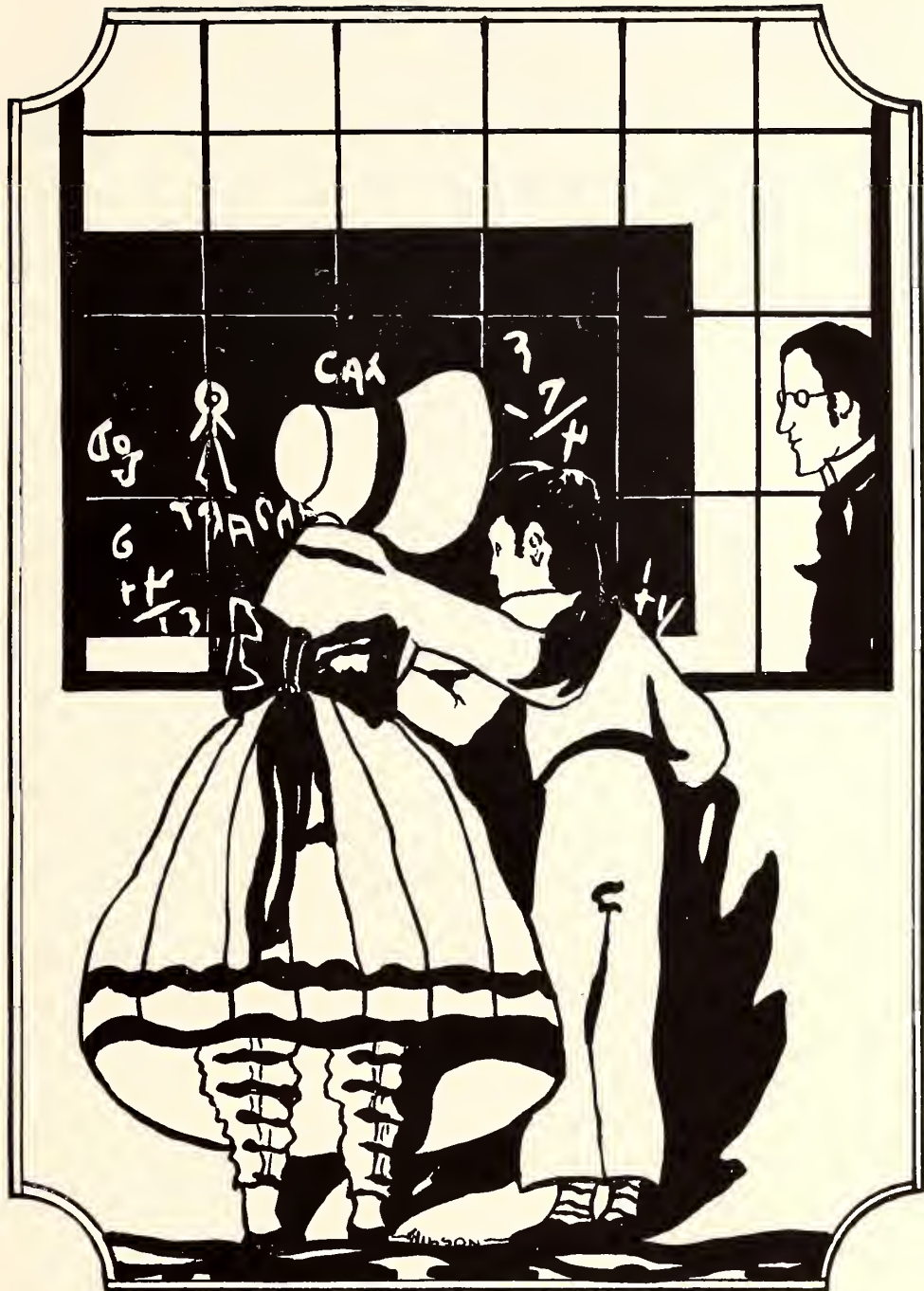


Amelott

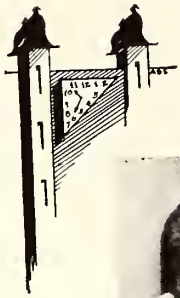


Burns

Richard Cole



Classes



SENIOR CLASS OFFICERS

William Starr.....	<i>President</i>
Nitelle Weatherford.....	<i>Vice President</i>
Harriett Holmes	<i>Secretary</i>
Robert Christison.....	<i>Treasurer</i>
Richard Kinnaman.....	<i>Student Council</i>
Vivian Bell.....	<i>Student Council</i>

DWAIN ANDREWS

Decatur

Sigma Alpha Epsilon; Spanish Club; "M" Club, '29; Varsity Football, '27, '28; Varsity Baseball, '27, '28, '30; Intramural Athletics; Class Committee, '31, '32.



KENNETH C. ANDREWS

Decatur

Delta Alpha Epsilon, Treasurer, '30, '31; Alpha Omega; Decaturian Business Manager, '32; Le Cercle Francais, '30; Band; Orchestra, '30, '31, '32; Track Manager, '29; Chemistry Club, '30, '31, '32; Senior Publications Board.

WILLIAM T. BALLINGER

Lexington

Tau Kappa Epsilon; Alpha Omega; Student Council, Treasurer, '30, '31; Le Cercle Francais; Workshop Players; Junior Class, President; Varsity Cheer Leader, "No. 17."



STEPHEN J. BATHORY

Decatur

VIVIAN N. BELL

Decatur

Delta Delta Delta, Secretary, '32; Pi Mu Theta, Vice President, '32; Pi Kappa Sigma, Secretary, '31; Student Council, '32; Millidek, '30, '31, '32; Decaturian, '30; Y. W. C. A. Cabinet, '32; W. S. G. A., Secretary, '32; Spanish Club, '29, '30; Biology Club, '29, '30; Vespers, '30, '31; Senior Ball Committee; Town and Gown Players; Spanish Play, '29; Property Manager; "Captain Applejack," "R. U. R.," "Queen's Husband," "Children of the Moon," "Easy Come Easy Go," "Sun Up."



HELEN E. BURNS

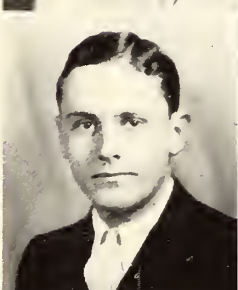
Decatur

Zeta Tau Alpha, President, '32; Millidek, '30; Spanish Club, '30; Y. W. C. A., Vice President, '32; W. A. A., '29, '30, '31; W. S. G. A.; Home Economics Club, Vice President, '32; Biology Club, '30; Senior Ball Committee; Vespers, '30.

ROBERT N. CHRISTISON

Decatur

Kappa Delta Chi, Secretary, '32; Senior Class Treasurer; Junior Prom Committee; Senior Ball Committee; Senior Publications Board.



RICHARD COLE

Decatur

Sigma Alpha Epsilon.

ROBERT COPE

Decatur

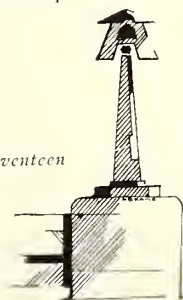
Sigma Alpha Epsilon, President, '32; Millidek, '31, '32; Kappa Phi Kappa, President, '32; Town and Gown Players; "Queen's Husband;" Senior Ball Committee.

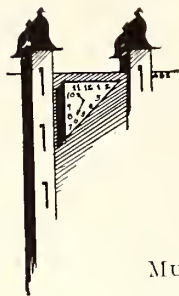


KENNETH CORLEY

Shelbyville

Millidek, '31, Business Manager, '32; Debating Team, '32; "Captain Applejack."





MUELLER COZAD
Decatur
Senior Ball Committee;
Junior Prom Committee.



EVELYN L. CROSSMAN
Tuscola
Delta Delta Delta; Le
Cercle Francais, Vice
President, '32; Conant
Society, '32; Biology
Club, '29; Kappa Key,
'31; French Prize, '30,
'31.

ARTHUR P. DANIEL
Decatur
Delta Sigma Phi, Pres-
ident, '31, Vice Presi-
dent, '30; Alpha Omega,
Treasurer, '32.



ULA DARLENE DAVIS
Decatur

Pi Mu Theta, Presi-
dent, '32; Student Coun-
cil, '32; Millidek, '31;
Spanish Club, '30; Y. W.
C. A., Secretary, '30,
President, '32; W. A. A.,
'29, '30, '31; W. S. G.
A.; Biology Club, '30,
'31; Freshman Commis-
sion, '29; Hockey Team,
'29, '30; Basketball, '29,
'30; Tennis, '30; Non-
sorority Women Treasur-
er, '32.

GEORGE L. C. DEHN
Chicago
Sigma Alpha Epsilon,
Treasurer, '32; Kappa
Phi Kappa, Secretary, '31,
President, '32; Alpha
Omega; Intramural Base-
ball and Basketball; Sen-
ior Class Committee;
Chairman Homecoming
Dance, '31; Student Di-
rectory Committee, '31.



EARL DUFFEY
Decatur
Phi Mu Alpha, Secre-
tary, '30; Le Cercle
Francais; Band, '31; Or-
chestra.

EARLUTH EPTING
Beardstown
Sigma Alpha Iota; Pi
Kappa Sigma, Treasurer,
'32; Y. W. C. A.; W. A.
A.; Vespers; A cappella
Choir; "Cavalleria Rusti-
cana."



ARKELL FISCHER
Lebanon
Delta Alpha Epsilon;
Alpha Omega; Varsity
Basketball, '29.

WELLMAN L. FRANCE
Staunton
Kappa Delta Chi; Al-
pha Omega, President;
"M" Club, Treasurer,
'32; Varsity Football;
Varsity Basketball, Cap-
tain, '32; Varsity Track,
Captain, '31, '32; Intra-
mural Athletics; Vespers,
'31; Senior Ball Commit-
tee; "Captain Applejack";
"No Count Boy."

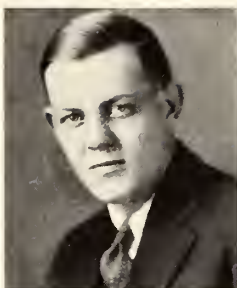


ELMER G. GIDEL
Mulberry Grove
Delta Alpha Epsilon;
Varsity Track, '27, '28;
Mathematics Club, '27,
'28.

JOHN W. GROHNE

Decatur

Tau Kappa Epsilon, Treasurer, '32; Decaturian; Spanish Club; "M" Club; Athletics Manager, '31, '32; Vespers; Town and Gown Players; "R. U. R."



PAUL HALMBACHER

Decatur

Alpha Omega; Millidek, '31; German Club, '31; Spanish Club, '29; Chemistry Club.



AMHERST F. HARDY

Decatur

Conant Society, '31, '32; Millidek, '32.



DAN O. HENRY

Decatur

Tau Kappa Epsilon, President, '31, '32; Alpha Omega; Student Council, '29; "M" Club, '32; Varsity Football, '32; Varsity Basketball, '32; Varsity Track, '29, '30; Intramural Athletics; Town and Gown Players, '31; Senior Class Committee; "R. U. R."



HELEN HILL

Nokomis

Alpha Chi Omega, President, '32; Le Cercle Francais; Y. W. C. A., Secretary, '31, Cabinet, '32; W. A. A.; W. S. G. A., Executive Committee; Vespers; Town and Gown; "Easy Come, Easy Go."



FLORENCE HOLDERREAD

Litchfield

Pi Kappa Sigma; W. S. G. A.; Aston Hall Student Council.



HARRIETT HOLMES

Decatur

Pi Beta Phi, Secretary, '30, President, '31; Pi Mu Theta, Treasurer, '32; W. S. G. A., '31; Le Cercle Francais; Y. W. C. A.; Millidek Editor, '31; Panhellenic, '30, '31; Mixed Chorus, '29; Freshman Popularity Contest; Junior Class, Secretary; Senior Class, Secretary; Senior Ball Committee.



RUTH JOCKISCH

Blue Mound

Le Cercle Francais; Orchestra; Y. W. C. A.; W. A. A.; W. S. G. A.; Conant Society, Treasurer, '32; Vespers.



BERNADINE JOHNSON

Casey

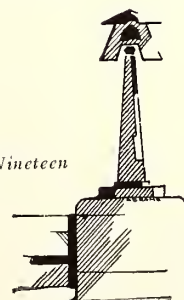
Theta Gamma; Le Cercle Francais; Band; Orchestra; Y. W. C. A., '29, '30; W. A. A.; W. S. G. A.; Home Economics Club, '29, '30, '31; Biology Club, '29, '30, '31; Vespers, '29, '31, '32; Freshman Commission; "Chimes of Normandy;" "Cavalleria Rusticana."

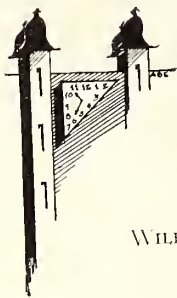


WALLY G. JORDAN

Decatur

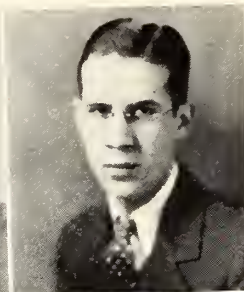
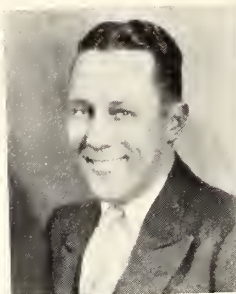
Vespers; "Aida;" "Cavalleria Rusticana;" Glee Club, '29.





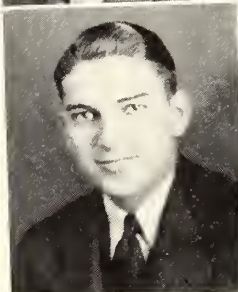
**WILLIAM KENNETH
KENNEDY**
Mound City

Kappa Delta Chi, Treasurer, '32; "M" Club; Varsity Baseball, '30, '31; Intramural Athletics, '30, '31.



**RICHARD B.
KINNAMAN**
Decatur

Tau Kappa Epsilon, Secretary, '32; Student Council, President, '32; Le Cercle Francais; Chemistry Club, '30, '31, '32; German Club, '31; Intramural Athletics; Vespers; Junior Prom Committee; Senior Ball Committee; Senior Publications Board.



VERLE KIRK
Oblong

Delta Sigma Phi, President, '32; Vice President, '31; "M" Club; Varsity Baseball, '29, '30, '31; Varsity Basketball, '28, '29.

WILMER A. LAMAR
Decatur

Tau Kappa Epsilon; Millidek Editor, '32; Decaturian, Assistant Editor, '31; Conant Society, '32; Brown Debate, '29; Coleman Modern History Prize, '29; Coleman English History Prize, '30; Senior Publications Board.

**VIRGINIA LARIMER
PECHAR**
Salem

Delta Delta Delta; Pi Kappa Sigma, Spanish Club, '29, '30; Y. W. C. A., '29; W. S. G. A.; Home Economics Club, Vice President, '31; Vespers, '29, '31; Chairman Cap and Gown Committee.

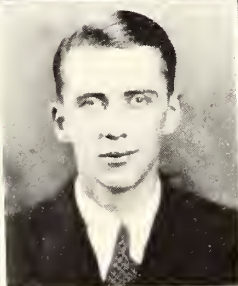


BERNICE LARRICK
Decatur

Sigma Alpha Iota, President, '32; Student Council, '32; Y. W. C. A., '29, '30; Panhellenic, '32; W. S. G. A., '32; Vespers; Junior Class, Vice President; A cappella Choir, '32; "Chimes of No. mandy."

BAIRD A. MARSH
Jacksonville

Intramural Athletics, '31, '32; Vespers; Glee Club, '29; "Chimes of Normandy."



MERVAL MAYBERRY
Decatur

W. A. A.; Conant Society, '31, '32; Workshop Players, '29; "The Rehearsal"; "Neighbors."

EDWIN MERKELBACH
Centralia

Delta Sigma Phi, Secretary, '32; Alpha Omega; Spanish Club, '29, '30.



**CHARLES OLIVER
MILLER**
Decatur

Kappa Delta Chi, President, '31; Millidek, '27, '28, '29; Decaturian; Conant Society, '28, '29, '30; Varsity Tennis, '28; Varsity Track, '30; Intramural Athletics, '30, '31; Vespers, '31; Town and Gown Players; Junior Prom Committee; "Easy Come, Easy Go."

ROSELYN PEASE

Decatur

Alpha Chi Omega, Student Council, '29, '30; Spanish Club, '29, '30; Y. W. C. A., '29, '30; Panhellenic, '31, President, '32; W. S. G. A., '32; Home Economics Club, Secretary, '32; Biology Club, '30; Senior Ball Committee.



JULIUS RESH

Decatur

Kappa Delta Chi; Varsity Track; Varsity Baseball; Varsity Football; Intramural Athletics.

ROBERT S. ROWE

Decatur

De'ta Alpha Epsilon, President, '32; Vice President, '31; Alpha Omega, Student Council, '32; Decaturian, Editor, '32; Assistant Editor, '31; Le Cercle Francais; Orchestra, '30; Conant Society, '31, '32; Junior Class, Treasurer; Senior Publications Board.



MARJORIE E. SCHLUNTZ

Joliet

De'ta Delta Delta, President, '32; Treasurer, '31; Pi Mu Theta, Pi Kappa Sigma, Y. W. C. A., W. A. A., W. S. G. A., Rules Committee, '32; Conant Society, President, '32

DOROTHY HELEN SHINOSKI

Decatur

Decaturian, '31; Le Cercle Francais, '31, '32; Conant Society, '31, '32.



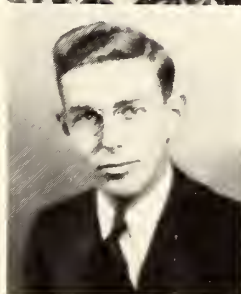
DALE SHULL

Moweaqua

HARRY H. SMITH

Decatur

Alpha Omega, Secretary, '32; Student Council, '29, '30; Brown Debate Prize, '30; John Schudel American History Prize, '31; Spanish Play, '29.



HILLIS A. STALEY

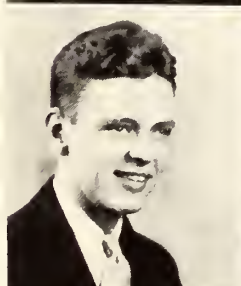
Warrensburg

Alpha Omega; Millidek, '29, '32; Decaturian, '29; Town and Gown Players, Treasurer, '31, '32; Senior Publications Board.

WILLIAM E. STARR

Decatur

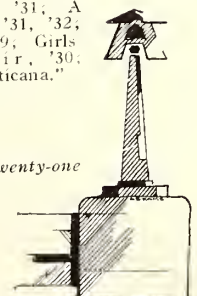
Sigma Alpha Epsilon, President, '31; Vice President, '32; Alpha Omega, Student Council, '32; Millidek, '31; Le Cercle Francais; Varsity Golf; Intramural Athletics, '29, '30, '31; Town and Gown Players; Senior Class, President; Sophomore, Junior Prom Committees; Senior Publications Board; Millikin Scholarship to University of Illinois; "Laugh That Off," "Queen's Husband," "Sun Up," "Dust of the Road."

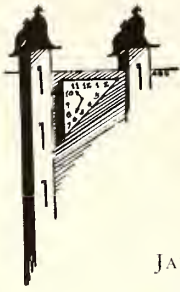


SARAH MARGARET STEVENS

Dalton City

Pi Kappa Sigma; Y. W. C. A., '29, '30, '31; Biology Club, '30; Vespers, '29, '30; Town and Gown Players, '31; A cappella Choir, '31, '32; Style Show, '29; Girls Ensemble Choir, '30; "Cavalleria Rusticana."





JANE STEWART

Decatur

Sigma Alpha Iota; Pi Mu Theta; Y. W. C. A., '28; Vespers, '29; "Aida," Junior, Senior Piano Recitals.



HAZEL SWENGEL

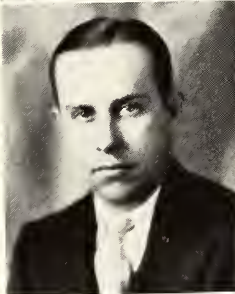
Neoga

Band; Orchestra, '29, '30; W. S. G. A.; Home Economics Club, President, '32; Junior Prom Committee; Cap and Gown Committee.

DOMINICK A. TARRO

Witt

Kappa Delta Chi; Alpha Omega; "M" Club, '29, '30, '32; Varsity Football; Varsity Basketball; Varsity Baseball, Captain, '32; Intramural Athletics.



ALICE TRADEWELL

Rantoul

Sigma Alpha Iota; Y. W. C. A., '30, '31; Vespers, '30, '31, '32; Student Volunteers, '30, '32; Vice President, '31; "Elijah," "Cavalleria Rusticana."

EDITH E. TSCHUDY

Highland

Zeta Tau Alpha; Spanish Club; Y. W. C. A.; Panhellenic, '32; W. S. G. A., Secretary, '30; Home Economics Club, Treasurer, '31; Vespers, '30, '31; Aston Hall Student Council, '29; Sophomore Class, Vice President; All Millikin Hockey Team.



JESS WAGUS

Decatur

Le Cercle Francais, President, '32; Spanish Club, Vice President, '30; Biology Club; French Prizes, First, '30, '31, Second, '29.

KATHERINE WALKER

Elgin

Pi Mu Theta, Secretary, '32; Student Council; Y. W. C. A., President, '31; W. A. A.; W. S. G. A., Rules Committee, '32; Biology Club, '29; Vespers, '29, '31; Aston Hall Student Council; Cap and Gown Committee; College Club Scholarship, '30; College Delegate to National Student-Faculty Conference, '31; "Chimes of Normandy."



NITELLE WEATHERFORD

Decatur

Delta Delta Delta, Secretary, '32; Phi Mu Gamma; Pi Mu Theta; Millidek, '31; Decaturian, '29; Le Cercle Francais; Spanish Club; Y. W. C. A.; Panhellenic, '32; Vespers; Senior Class, Vice President; Junior, Senior Prom Committees; Senior Cut Day Committee.

FRANCES E. WILSON

Decatur

Zeta Tau Alpha; Millidek, '30, '32; Decaturian, '30, '31; Y. W. C. A., Cabinet, '31, '32; W. A. A., President, '30, Vice President, '29; W. S. G.



A.; Biology Club; Vespers, '31, '32; Junior, Senior Prom Committees; Scenic Artist, '31, '32; Varsity Hockey Team, '30; Basketball, '29, Captain, '28, '30.

GWENDOLYNE BURGESS

St. Louis, Mo.

Theta Gamma, President, '31; Phi Mu Gamma; Pi Mu Theta; Millidek, '32; Spanish Club, '29; Y. W. C. A.; Panhellenic, '31; W. A. A.; W. S. G. A.; Conant Society, '32; Biology Club, '28; Aston Hall Student Council; College Club Prize, '31.

GEORGE B. CORBETT

Lockport

Kappa Delta Chi, President, '32; "M" Club, President, '32; Varsity Football, Captain, '32; Varsity Baseball, '29.

GWENDEL C. DAVIS

Nokomis

Kappa Delta Chi; Varsity Football; Intramural Athletics; "M" Club.

WINFIELD MCFADDEN

Havana

EUGENE M. JONQUET

Decatur

Millidek, '32; Debate Team, '32; Conant Society, '31, Secretary, '32; Vespers, '32; Town and Gown Players, '32; Senior Class Committee; "No Count Boy;" "Sun Up."

MARY KEMMERER

Decatur

Theta Gamma.

DOROTHY KLUNDER

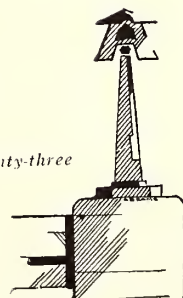
Wilmette

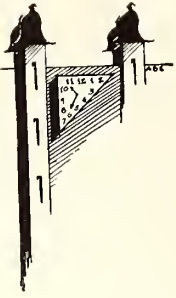
Alpha Chi Omega, President, '31, Vice President, '30; Phi Mu Gamma, Treasurer, '31; Millidek, '32; Y. W. C. A.; Panhellenic, Secretary, '31; W. S. G. A., President, '31, '32; Vespers, '29, '30, '31.

DEWITT MANCELL

Bunker Hill

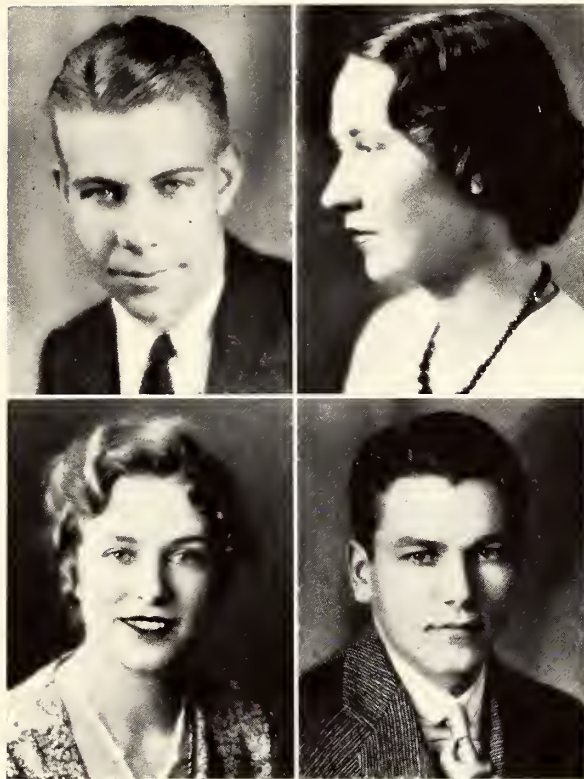
Phi Mu Alpha, Treasurer, '32; Band; Vespers.





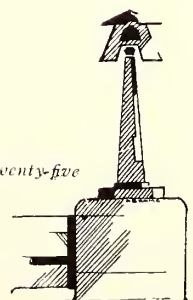
To carry on a tradition maintained in Millikin for eighteen years; to honor seniors for discriminating ideas and force to carry them out; for high achievement in college citizenship and diligent application in scholastic endeavor, a representative senior committee of five adds to the list of those previously honored, the names of nine J. M. U. Ites:

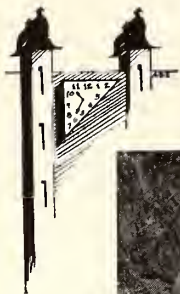
VIVIAN BELL
EVELYN CROSSMAN
WELLMAN FRANCE
DAN HENRY
HARRIETT HOLMES
WILMER LAMAR
KATHERINE WALKER
FRANCES WILSON
WILLIAM STARR



JUNIOR CLASS OFFICERS

Cecil Rigg.....	<i>President</i>
Phyllis Seago.....	<i>Vice President</i>
Melba Klingler	<i>Secretary</i>
Charles Brummer.....	<i>Treasurer</i>
Roy Rollins.....	<i>Student Council</i>
Marian Miller.....	<i>Student Council</i>





JUNIOR CLASS

Harvey Jester, Harry Hood, Harold Orvis, Herbert Sanner, Richard Rodgers, Forest DeWeese, Wayne Mitchell, John Harrell

Lloyd Baird, Everett Yount, Dan Siders, Wilbur Sleeper, Charles Brummer, Ernest Gower, Ira Young, Wallace Munsie

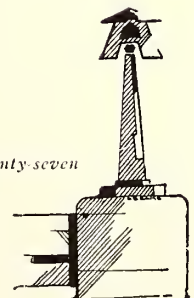
Lois Waddell, Marion Trow, Alice Smith, Dorothy Adams, Ruth Cobb, Eunice Trott, Marian Harris, Edith Morris

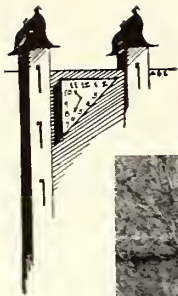
Melba Klingler, Norma Smith, Aubrey Royce, Alice Stewart, Sarah Morris, Grace Watson, Marian Miller, Wilson Kreitzer, Harold Schwertfeger



SOPHOMORE CLASS OFFICERS

Walter Griswold	<i>President</i>
Jean Timm	<i>Vice President</i>
Wilma Burwell	<i>Secretary</i>
Helen McBride	<i>Treasurer</i>
John Mey	<i>Student Council</i>
Mary Martha Abrams	<i>Student Council</i>





SOPHOMORE CLASS

Larry Slouf, Frederick Schudel, John Baldwin, David Barth, Kenneth Bradley, Alfred Black, Thomas Bean,
John Mey, Wayne Ragsdale, Otto Sch'lachter, Edgar Lobenstein

Randall Barrow, William Posegate, Frank Henry, Walter Griswold, Dean Hook, Frank O'Neill, Harold
Brintlinger, James Fitzpatrick, La Verne Meyer, Arthur Wells, Maurice Alexander, Lester Nalefski

Edwin Major, Raymond Egebrecht, John Thornton, Ernest Lorenz, Robert Lamar, Robert Hawley

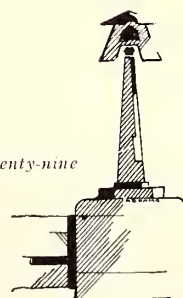
Allan Russel, Alfred Miller, Homer Thureau, Charlotte Oakes, Helen Bottrell, Reva ose Wallins, Bernice
Bailey, Pauline Renfro, Alicia Skeet, Marcia Trout, Drexel Mey

Mary Hampton, Mary Louise Heckel, Miriam Nash, Deda Shull, Elinor Pfeiffer, Jean Timm, Barbara
Clippinger, Lucille Michaels, Wilma Burwell, P' o othy Sellers, Marna Radford, Eva Marie VonLanken



FRESHMAN CLASS OFFICERS

Ned Furman.....	<i>President</i>
Kathryn Yochum.....	<i>Vice President</i>
Dorothy Mae Wilking.....	<i>Secretary</i>
Carl Garver.....	<i>Treasurer</i>
John Stoutenborough	<i>Student Council</i>
Frances Lewis	<i>Student Council</i>



FRESHMAN CLASS



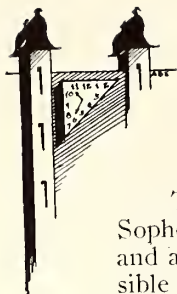
Fritts, Bickle, Tebby, Hudson, Miller, Rolinaitis
 Eubank, Botts, Shelton, Kinnaman, Harris, Hart, Sanks, Heinlein
 Stoutenborough, Gebhart, Easterday, Schlie, R. Spillman, McHenry, Rademacher, Burhans
 Clandon, Smick, Becker, Lewis, Schroeder, Fawley, McCormick, W. Spilman, Keck
 Evans, Kush, Garver, Curran, McKenzie, Crawford, Requarth, Furman, Ellis



Tice, Kazmark, Lewis, Warren, H. Nichols, Andrews, B. Nicholls, Grinstead, Santanen, Helm, Sullivan
 Marsden, C. Schwarm, Lamb, Moorehead, Greer, Lyon, Rugh, Snedeker, Danner, Folrath, Conklin,
 Maloney, E. Schwarm
 Baker, Carey, Allen, Schiwek, Norton, Myers, Johnson, Newman, Yockum, Moore, Robertson
 Auer, Marshall, Gustin, Wismer, Bayless, Smith, Jackson, Wilking, Doake, Waggoner, Langellier, Dabler,
 Maronto



Organizations



STUDENT COUNCIL

The Student Council, with the help of Alpha Omega, sponsors the Freshman-Sophomore Scrap, the Homecoming parade, the judging of the house decorations, and all other Homecoming activities. Student Council members are also responsible for the scholarship cups. The Student Council is made up of eighteen members and from this group the following officers were chosen:

PresidentRichard Kinnaman
Vice President.....Marian Miller
SecretaryWalter Griswold
TreasurerRoy Rollins

PANHELLENIC

The object of Panhellenic is, "To maintain on a high plane fraternity life and inter-fraternity relationship; to cooperate with college authorities in their effort to maintain high social and scholastic standards; and to be a forum for the discussion of questions of interest to the college and fraternity world."

This body is made up of two representatives from each national sorority on the campus, with Sigma Alpha Iota and Theta Gamma as associate members. It makes and enforces all rushing rules. Each spring it gives a banquet honoring Millikin women with the highest scholastic averages.

OFFICERS

PresidentRoselyn Pease
Vice President.....Margaret Powers
SecretaryHarriett Holmes
Treasurer.....Lois Waddell

W. S. G. A.

The purpose of the Women's Student Governing Association is "to regulate all matters pertaining to the student life of women of the college that do not fall under immediate jurisdiction of the faculty; to unite the activities of women in an effort to promote and maintain the highest standards of the college; to foster among women a feeling of mutual responsibility and high regard for both liberty and order."

Twelve women, among whom are the presidents of all women's organizations of the campus, make up this body which draws up regulations for women. The officers are: Dorothy Klunder, president; Dorothea Sanner, vice president; and Vivian Bell, secretary-treasurer.

THE WORKSHOP PLAYERS



The pride of Janice Meredith and the Workshop Players for this year was the outdoor play, "Glory of the Morning," presented on the lagoon at the Mueller Lodge. The act was doubly effective since an October evening at sunset was the exact setting required.

Through the efforts of these players, the intimate studio-theatre in Kaeuper Hall has been equipped with its small stage and neutral background. It was here they presented their one act plays, and, more than once, served tea afterwards to their guests in the library.

LE CERCLE FRANCAIS

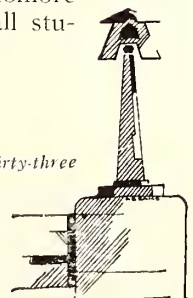
OFFICERS

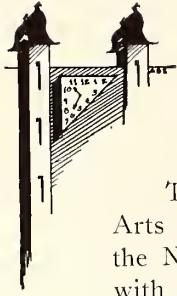
President.....Jess Wagus

Vice Presidents.....Winifred White and Evelyn Crossman

Secretary-Treasurer.....Virginia Henebry

Le Cercle Francais meets regularly, gives teas, and offers members the opportunity to hear French natives who are studying in American universities. This French Club is open for membership to those in high standing in Sophomore French classes, to students with unusual interest in the subject, and to all students in advanced French classes.





HOME ECONOMICS CLUB

The Home Economics Club, for women enrolled in the School of Household Arts and others interested in foods and clothing, affiliated itself this year with the National Home Economics Club, an organization of many university clubs with like purpose. Officers of the club who have led the group in a series of interesting lessons with educational value are: Hazel Swengel, president; Helen Burns, vice president; Roselyn Pease, secretary; and Wilma Burwell, treasurer.

Y. W. C. A.

1931	OFFICERS	1932
Ula Davis	<i>President</i>	Margaret Powers
Helen Burns	<i>Vice President</i>	Marion Trow
Margaret Powers	<i>Treasurer</i>	Margaret Stewart
Winifred White	<i>Secretary</i>	Winifred White

With the purpose "to realize a full and creative life," Y. W. C. A. has sought to achieve this end with comprehensive and varied activity. Anna Lee Danner and Mary Hampton planned the programs presented at 4:30 o'clock every Wednesday afternoon in Aston Hall.

During Millikin Week, organized effort was made by Y. W. C. A. to welcome all Freshman women, and members helped to orient them.

Vivian Bell and Margaret Powers had charge of the Leap Year Dance, March 5, in the gymnasium in which George Musso and Pauline Requarth were crowned king and queen of the College.

The Freshman Commission, under the leadership of Georgia Tice, president, to raise funds to send a delegate to the Y. W. C. A. camp at Lake Geneva in 1932, set aside May 12 as tag day.

Y. W. C. A. served the annual May breakfast in Aston Hall, Caroline Schwarm and Dolly Lindsey making the arrangements.

TOWN AND GOWN PLAYERS



The Town and Gown production, "Sun-Up," was a good performance, the kind in which the audience shows its interest by a hushed quiet, rather than applause. In the role of the old mountain woman, Katherine Stadler did some work that was outstanding. Other parts were well taken by Ernest Gower, Lois Sayre, Robert Sattley, Richard Bennett, William Goodwin, William Starr, and Frank Benson.

The Town and Gown Players have also produced the Homecoming play, "Easy Come, Easy Go," in which Frank Henry and Adelaide Pease took the leads. The two plays were directed by L. C. McNabb.

The Play Production Division of the Players presented three one act plays, directed by Virginia Henebry, Harry Smith, and Eugene Jonquet.

CONANT SOCIETY

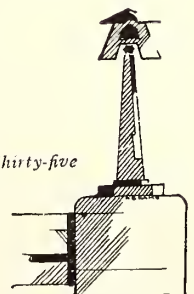
OFFICERS

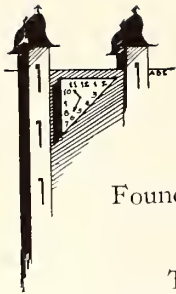
President.....Marjorie Schluntz

Vice President.....Marion Trow

Secretary-Treasurer.....Ruth Jockisch

Those genuinely interested in literature find new impetus for literary appreciation in Conant Society. In the monthly meetings conducted in different sorority and fraternity houses on the campus, its members enter into the world of books. Poetry, drama, novels—all absorb one's attention in this organization. Membership is limited to upper classmen who are either English majors or have a vital interest in that field.





DELTA OMICRON

Founded: 1909

Established: Tau, 1927

Active Chapters, 26

Tau Chapter of Delta Omicron had no active members in Millikin during the first semester. On March 30, however, Pauline Brown and Louise Barger were pledged, and on April 12, Margaret Schiwek and Rachel Marshall were also pledged. Miss Brown was president of the pledges and Herma Heisner the alumni president in charge.

ORCHESTRA

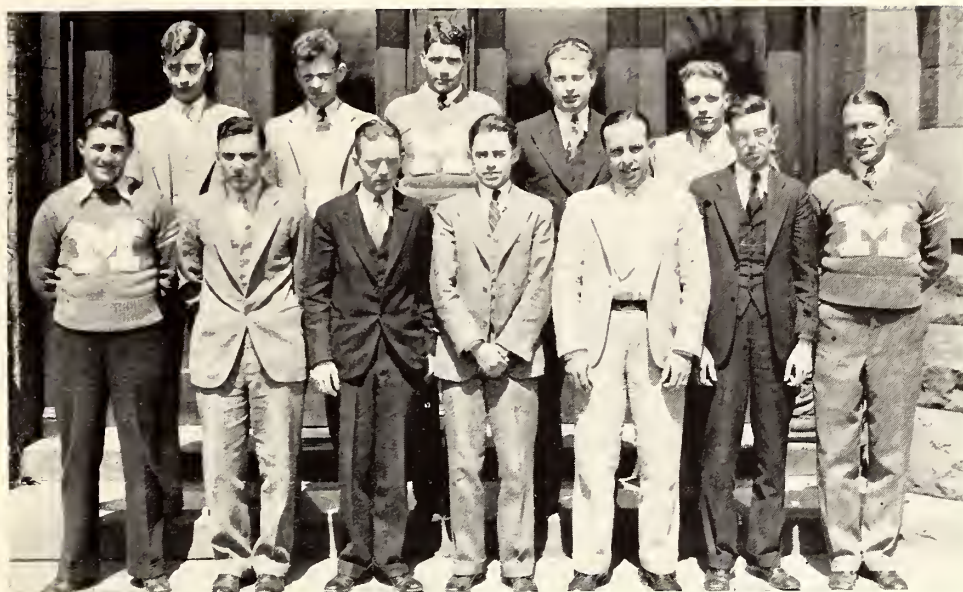
Thirty musically inclined and talented students under the directorship of Mr. H. C. Hess form the James Millikin University Orchestra. Their presentation of a Beethoven symphony concert was given in the Millikin auditorium April 14 with Mary Heideman, Eleanor Cobb, Earl Duffey, Barbara Clippinger, and Madelyn Pygman as soloists.

PHI MU ALPHA

Beta Theta Chapter of Phi Mu Alpha, Sinfonia, is an organization which exists to create and develop interest in musical appreciation. The Millikin Chapter is made up of students, teachers, and professional men interested in music.

Bi-monthly meetings were conducted in which topics in the history and theory of music were discussed. Phi Mu Alpha presented two recitals in the spring of 1932, one devoted to American music and the other to classical music of other countries.

ALPHA OMEGA



Robert Rowe, William Starr, Dan Henry, Kenneth Andrews, George Dehn
George Corbett, Edwin Merkelbach, Hillis Staley, Paul Halmbacher, Domnick Tarro, Harry Smith,
Wellman France

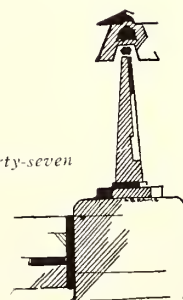
You may have seen the silver trophies the K D's, Sig Alphas, and Tekes proudly display. Alpha Omega was responsible for thus rewarding these fraternity sprinters and basketball players. The All-Millikin Dance in the gymnasium the first of the year was sponsored by Alpha Omega. With the Student Council, Alpha Omega took charge of Homecoming activities.

This senior men's fraternity is made up of three men from each fraternity on the campus, and three independent men. Juniors pledged in the spring of 1932 are:

Forest DeWeese
Ira Young
Joseph Dorgan
Charles Brummer

Dan Siders
Walter Griswold
Ernest Gower
Harry Hood
Henry Merriam

Maurice Steinhauer
Albert Miller
Stuart Gebhart
John Harrell



PI MU THETA

OFFICERS

President.....Ula Davis
Vice President.....Vivian Bell
Secretary.....Katherine Walker
Treasurer.....Harriett Holmes
Marshal.....Gwendolyne Burgess

Junior women who have good scholastic records and who are active in extra-curricular activities may find themselves asked to become members of Pi Mu Theta. Each spring, one-tenth of the women of the Junior class are elected to this Senior women's honorary fraternity. Junior women chosen April 27 in the home of Nitelle Weatherford are Marion Trow, Hazel Friend, Marian Miller, Aubrey Royce, Eunice Trott, Margaret Glover, and Norma Smith.

PI KAPPA SIGMA

1931

OFFICERS

1932

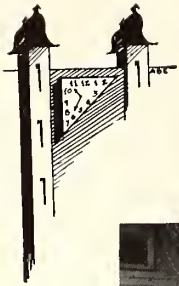
Ruth Cobb	<i>President</i>	Marian Harris
Earluth Epting	<i>Vice President</i>	Bernice Scott
Bernice Scott	<i>Secretary</i>	Ruth Cobb

Pi Kappa Sigma is a national honorary educational fraternity, for those women who are preparing to teach, or who are otherwise interested in education.

Ruth Cobb went as delegate to the national convention in Los Angeles in 1931.



Fraternities



ALPHA CHI OMEGA

Founded: 1885

Established: Upsilon, 1913



Pygman, warden, '32; Burwell, corresponding secretary, '31, treasurer, '32; Yochum; Clark, recording secretary, '32; Wilson; Doake; Miller, treasurer, '31, social chairman, '32; Eirich, corresponding secretary, '32; Talbott; Stadler; Waggoner; Newman; Norton

Johnson; Myers; Klunder; Toulme, vice president, '32; Clippinger, vice president, '31, president, '32; Mrs. O. V. Boone, house mother; Hill, president, '31; Pease, Lyre editor, '31; Michaels, social chairman, '31, warden, '31

Eshelman; Sayre, recording secretary, '31, historian, '32, Lyre editor, '32; Langellier; Sandifer



Seniors

Helen Hill
Roselyn Pease
Dorothy Klunder

Juniors

Marian Miller
Mary Edith Kable
Ruth Talbott

Sophomores

Barbara Clippinger
Helen Eshelman
Wilma Burwell
Madolyn Pygman
Lois Sayre
Elvera Clark
Lueille Michaels
Madeline Toulme
Norma Eirich
Lueille Wheeler

Freshmen

Kathryn Wilson
Marella Stadler
Courtenay Ellen
Sandifer
Grace Langellier
Helen Newman
Kathryn Yochum
Mary Catherine
Waggoner
Mary Louise Doake
Marjory Johnson
Marjorie Myers
Jeanette Norton

DELTA DELTA DELTA

Founded: 1888

Established: Epsilon, 1912



Bailey; Pechar, marshal, '31; Wallins, vice president, '32; Auer, recording secretary, '32; Crossman; Mrs. Dickman
Weatherford, corresponding secretary, '31; Schluntz, president, '31; Wilking; Timm, treasurer, '31, president, '32
Smith, vice president, '31, marshal, '32; Pfeiffer, chaplain, '32; Klingler, treasurer, '32; Waddell; Baker

Seniors

Marjorie Schluntz
Virginia Pechar
Lois Waddell
Nitelle Weatherford
Vivian Bell
Evelyn Crossman

Juniors

Melba Klingler
Norma Smith

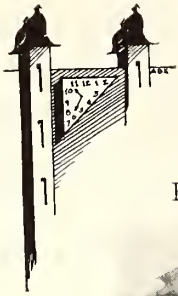
Sophomores

Eleanor Duncan
Elinor Pfeiffer
Jean Timm
Winifred White
Bernice Bailey
Revarose Wallins

Freshmen

Emma Auer
Arlene Smith
Sally Baker
Dorothy Mae Wilking





PI BETA PHI

Founded: 1867

Established: Illinois Eta, 1912



Marsden, Snedeker, Atkinson, Elizabeth Schwarm, Conklin, Danner, Rugh, Lamb
Lyon; Caroline Schwarm; Robertson; Greer; Knauss, recording secretary, '32; Maloney; Requarth; Folrath;
Moorehead
Stewart, corresponding secretary, '31, '32; Proctor; Morris, president, '32; Holmes, president, '31; Gilman,
recording secretary, '31, treasurer, '32; Royce, vice president, '31, '32; Glover

Senior

Harriett Holmes

Juniors

Margaret Glover
Aubrey Royce
Phyllis Seago
Alice Stewart

Virginia Fulenwider

Sarah Morris
Dorothy Knauss
Melba Proctor

Sophomores

Mildred Campbell
Carolyn Gilman
Betsy Atkinson

Freshmen

Anna Lee Danner
Catherine Greer
Willa Robertson
Kathryn Snedeker
Caroline Schwarm
Elizabeth Schwarm
Mary Marsden
Pauline Requarth
Martha Maloney
Martha Rugh
Lelia Lamb
Rosemary Moorehead
Cynthia Conklin
Marjorie Moore
Virginia Folrath
Catharine Lyon



SIGMA ALPHA IOTA

Founded: 1903

Established: Mu, 1917



Epting; Cobb, chaplain, '31; Gregory; Skeet, vice president, '31; Gustin
Adams, recording secretary, '31; Tradewell; Trout, sergeant-at-arms, '31
Larrick, president, '31, '32; Friend, corresponding secretary, '31; Stewart, treasurer

Seniors

Alice Tradewell
Bernice Larrick
Jane Stewart
Earluth Epting

Juniors

Dorothy Adams
Ruth Cobb
Eunice Trott
Hazel Friend

Sophomores

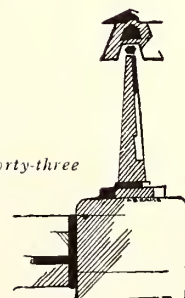
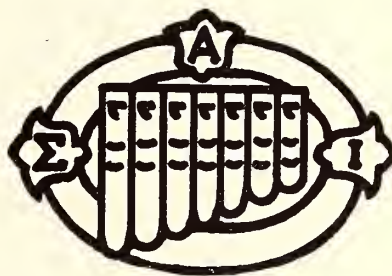
Marcia Trout
Alicia Skeet
Kathryn Baumann
Marna Radford
Ruth Gregory

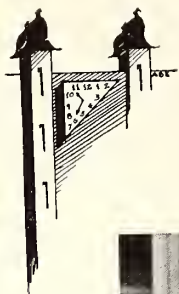
Freshman

Anita Gustin

Special

Virginia Gray





THETA GAMMA

Founded: The James Millikin University, 1921

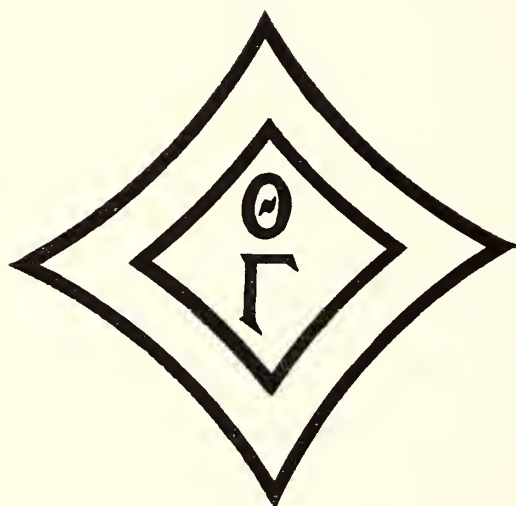


Burgess; Austin, vice president, '31

Heckel, social chairman, '32; Durham; Marsh

Martin; Johnson, treasurer, '31, '32; Grinstead; Watson, social chairman, '31

Maxey, president, '31, '32; Calhoun; Nicholls, vice president, '32; Beckhelm, secretary, '32; Williams



Seniors

Mary Kemmerer
Bernadine Johnson
Gwendolyne Burgess

Junior

Grace Watson

Sophomores

Madelyn Butler
Erline Calhoun
Mary Louise Heckel
Caroline Austin
Virginia Marsh
Virginia Maxey
Rose Martin
Charlotte Remley

Freshmen

Marie Durham
Dorothy Grinstead
Maxine Beckhelm
Bertha Nicholls
Marianne Williams

ZETA TAU ALPHA

Founded: 1898

Established: Tau, 1912



Morris, McBride, treasurer, '31, vice president, '32; Kazmark, historian, '32; Sellers, guard, '32; Lewis, secretary, '32

Powers, vice president, '31, president, '32; Hill, secretary, '31; Burns, president, '31; Wilson

Levinson, treasurer, '32; Tschudy, guard, '31; Lindsey; Henebry; Tice

Seniors

Helen Burns
Edith Tschudy

Juniors

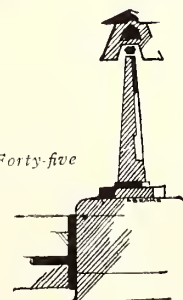
Margaret Powers
Edith Morris

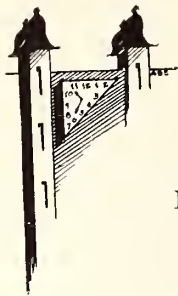
Sophomores

Mildred Hill
Helen McBride
Dolly Lindsey
Dorothy Sellers

Freshmen

Charlene Levinson
Katherine Kazmark
Frances Lewis
Georgia Tice





DELTA ALPHA EPSILON

Founded: 1922

Established: Gamma, 1927

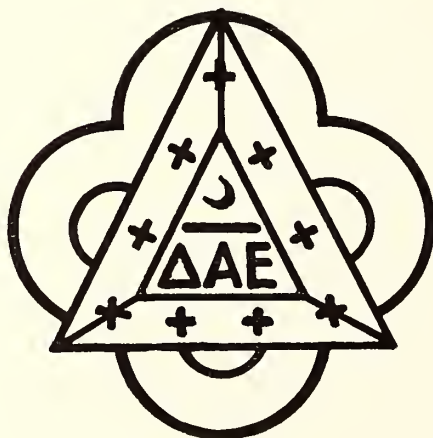


1931

OFFICERS

1932

Ira Young	<i>President</i>	Robert Rowe
John Mey	<i>Vice President</i>	Wayne Mitchell
Robert Rowe	<i>Secretary</i>	John Mey
Richard Rodgers	<i>Treasurer</i>	Richard Rodgers
Herald Warters	<i>Social Chairman</i>	Kenneth Andrews



Seniors

Kenneth Andrews
Arkell Fischer
Elmer Gidel
Robert Rowe

Juniors

Charles Brummer
Joseph Dorgan
Harvey Jester
Wayne Mitchell
Richard Rodgers
Ira Young

Sophomores

John Mey
John Thornton

DELTA SIGMA PHI

Founded : 1899

Established : Alpha Lambda, 1921



Cook, secretary, '31; Dickerson, vice president, '31; Merkelbach, secretary, '32; Vincent, vice president, '32; Thureau; Daniel, president, '31

Tedford; Spilman; Mrs. Mae Sanders; Rogers; Kirk, president, '32

Seniors

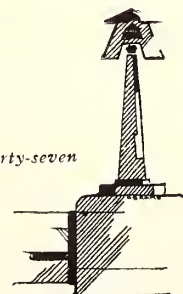
Arthur Daniel
Edwin Merkelbach
Verle Kirk

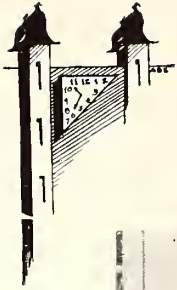
Sophomores

Homer Thureau
Marion Vincent

Freshmen

Walter Spilman
Emerson Tedford
Leon Rogers



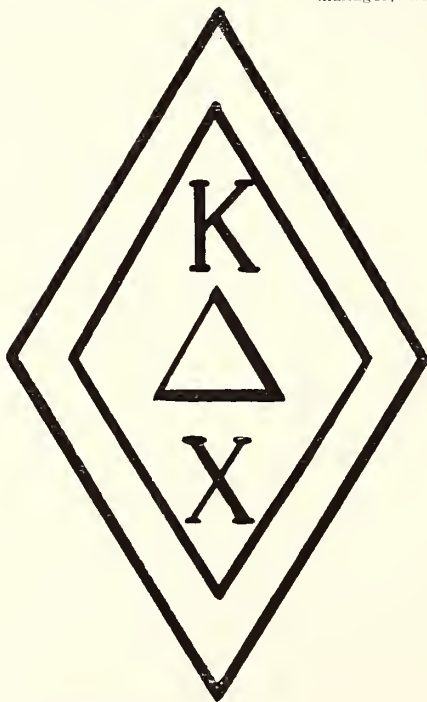


KAPPA DELTA CHI

Founded: The James Millikin University, 1904



Bradley, Heinlein
McHenry, Schneeman, Schlademan, Requarth, Paczak, Rademacher
Griswold, secretary, '32; Hook; Baldwin; Schudel; Stoutenborough; Clauter; Claudon
Gower, treasurer, '32; Dever; Sanders; Russell, house manager, '32; Baird, vice president, '32; Yount,
commissary, '32; Roberts; Siders, president, '32, vice president, '31
France; Christison, secretary, '31; Newton; Corbett, president, '31; Tarro, commissary, '31; Davis, house
manager, '31; Kennedy, treasurer, '31



Seniors

George Corbett
Wellman France
Gwyndel Davis
Domnick Tarro
Robert Christison
Oliver Miller
Kenneth Kennedy
Julius Resh
Frank Newton

Juniors

Lloyd Baird
Dan Siders
Everett Yount
Herschel Dever
Ernest Gower
Walter Griswold
Dale Roberts

Sophomores

John Baldwin
Charles Sanders
James Dean Hook
Allan Russell
Fred Schudel
Kenneth Bradley

Freshmen

Edward Clauter
Robert Schlademan
John Schneeman
John Heinlein
Harvey Miller
Harold Norcross
Michael Paczak
Walter Rademacher
William Requarth
John Stoutenborough
Glen Claudon

SIGMA ALPHA EPSILON

Founded: 1856

Established: Delta, 1911



Brilley; Kreitzer, chronicler, '32; Hart; Cole
Brintlinger; O'Neill, chronicler, '31; herald, '32; Hood, recording secretary, '31; Munsie, recording secretary, '32; Andrews; Dehn, treasurer; Major
Bengson, Cope, president, '32, corresponding secretary, '31; Starr, president, '31, vice president, '32; Merriam, vice president, '31; Smith; Steinhauer; Sanks

Seniors

Robert Cope
William Starr
George Dehn
Richard Cole
Dwain Andrews

Juniors

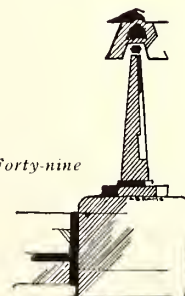
Henry Merriam
Harry Hood
Emil Bengson
Wallace Munsie
Maurice Steinhauer
Wilson Kreitzer

Sophomores

Frank O'Neill
Edwin Major
Harold Brintlinger
Elbert Smith
James Fitzpatrick
Joseph Brilley

Freshmen

Paul Hart
Harold Sanks



TAU KAPPA EPSILON

Founded: 1899

Established: Beta, 1909



Elmer Fawley, Tebby, Meyer, Easterday, Harris, Schroeder
Evans; Lewis; Frank Henry, vice president, '32; Posegate, historian, '32; Schwertfeger, pledge manager,
'32; Rollins, president, '32; Becker, secretary, '32
Ballinger; Grohne, treasurer, '32; Dan Henry, president, '31; Dan Fawley; Kinnaman, secretary, '31; Lamar

Seniors

William Ballinger
Dan Fawley
John Grohne
Dan Henry
Richard Kinnaman
Wilmer Lamar

Juniors

Forest DeWeese
Howard Gravett
Frank Henry
Roy Rollins
Harold Schwertfeger
William Posegate



Sophomore

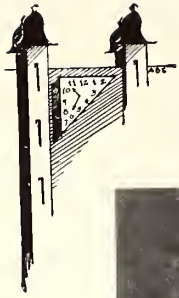
LaVerne Meyer

Freshmen

Maynard Becker
Edwin Curran
Everett Easterday
Kenneth Evans
Harry Harris
Donald Lewis
Wayne Schroeder
Ernest Tebby
Elmer Fawley



Athletics



FOOTBALL



Rollins, Heinlein, Resh, Gebhart, E. Fawley, Siders, manager
Johnson, Curtis, DeWeese, Harrell, Henry, Rolinaitis, Russell, Gill
Devers, Corbett, D. Fawley, Musso, France, Tarro, Miller

SCORES

Millikin 0	St. Louis 27	Millikin 6	Illinois Wesleyan 0
Millikin 32	Scott Field 0	Millikin 32	Illinois College 0
Millikin 0	Kansas U. 30	Millikin 25	Elmhurst 0
Millikin 22	Crane (Chicago) 0	Millikin 12	Bradley 19
	Millikin 25	Charleston 0	(Homecoming)

Coach Leo Johnson enjoyed unusual success with this year's grid team. The squad was the smallest in several years and the prospect of equalling former standards seemed a hard one. In the previous nineteen conference games, the Johnsonmen had dropped but one game and had annexed two championships.

After a week and a half of practicing, Captain George Corbett and the team traveled to St. Louis University for one of the hardest games of the season. With George Musso out of the line, the defense crumbled and St. Louis piled up a big score in the last half. Returning to the Millikin field, the small but game team rested as it won over Scott Field. Corbett made runs of forty-seven and fifty-six yards for touchdowns, while France ran fifty-two yards for the third score. Miller and Heinlein both scored after blocked punts.

Twenty men were all that were left for the Kansas game. After battling convincingly for a half, the Millikin men were on the short end of the 6-0 score. A fourth quarter siege found the Blue tiring before the large Jayhawker squad. Wellman France received a broken collar-bone in this game, and was unable to don a suit the remainder of the season. This was undoubtedly a big blow to any hopes Millikin had.



Captain George Corbett



Captain-elect George Musso

Crane College put up a strong fight but fell before the Blue. Wesleyan, in a night game, although outgaining Millikin convincingly, went down in defeat as Danny Dever carried the ball over. All eyes were on Corbett, who had been the menace of the Titans as well as every other Millikin opponent.

In the Homecoming game, it was the fleet Corbett who again gave the spectators a thrill. A ninety-five yard return of the kickoff, and several other long runs were to his credit. Johnny Harrell recovered a fumble and took the ball over, and soon after Dever finished the scoring.

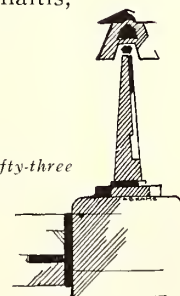
Illinois College was the next to fall before the Blue, who remembered the 6-2 setback on the Jacksonville field two years before. Corbett made two touchdowns, and Dever, Heinlein, and Elmer Fawley each contributed one.

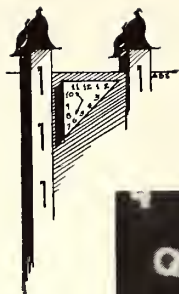
Playing his last game on the Millikin field, Captain Corbett stayed in the Elmhurst game only long enough to score two touchdowns and then bid adieu forever to the field that had been the scene of many a battle for the great halfback.

Most of the University trekked to Peoria for the final contest. Corbett sprinted sixty-two yards for the first touchdown, but the passing of Esterdahl, and the playing of McClarence were too much for the Millikin men. Corbett added another marker, but Bradley won 19-12. This was Millikin's second conference loss in four years.

Dan Fawley, Dan Henry, Gwyndel "Stud" Davis, Domnick Tarro, Wellman France, and Captain Corbett were the seniors on the squad. They will be missed next season, because of their great contribution to Millikin in the last four years. Corbett, Musso, and Tarro made the all-conference team, while Dan Fawley and Roy Rollins made the second team. Several others received honorable mention. George Musso, all-conference tackle for the last three years, was elected captain for 1932. Dick Hanley of Northwestern University spoke at the banquet.

Lettermen were Captain Corbett, Captain-elect Musso, Dan Fawley, Roy Rollins, Dan Henry, Wellman France, Gwyndel Davis, Domnick Tarro, Allan Russell, Johnny Harrell, John Heinlein, Elmer Fawley, Al Miller, Joe Rolinaitis, Danny Dever, and Loren Curtis.





BASKETBALL



Grohne, manager, Eubank, F. Henry, Thureau, Schudel, assistant manager
Spilman, Steinhauer, D. Henry, France, Rolmaitis, Miller

SCORES



Captain-elect Steinhauer

Millikin	22	Sparks	15
Millikin	14	Loyola	30
Millikin	34	Centenary..	20
Millikin	33	Charleston	30
Millikin	18	Wesleyan..	31
Millikin	25	Bradley	26
Millikin	28	Illinois C.	32
Millikin	12	N. Central	35
Millikin	26	Loyola	29
Millikin	26	Eureka	31
Millikin	22	Wesleyan..	18
Millikin	23	Eureka	25
Millikin	25	N. Central	23
Millikin	36	Illinois C.	40
Millikin	21	Bradley	19
Total points 375		404	



Captain France

Captain Wellman France led his inexperienced team through one of the most thrilling seasons in recent years. Losing five lettermen from the year before, Coach Gill had only three lettermen on which to build a team. He developed two freshmen into high caliber guards. After looking hard for a center, Gill

found one in Dan Henry, a senior. Dan could easily control the tip in most of the games. Maurice Steinhauer and France teamed at forward. This combination played the entire season. France and Steinhauer led the scoring with 110 and 89 points, respectively. Spilman and Rolinaitis followed next in order. Al Miller was the only other letterman, and his fighting and scrapping were of great value to the team. With the exception of Loyola and Illinois College, Millikin divided games with each team. Victories over Charleston, Eureka, North Central, Wesleyan, and Bradley were the high spots in the season. The 29-26 loss to Loyola on the Chicago floor was a great exhibition.

At times the Blue team was unable to get started, but once it began its drive it was unbeatable.

Captain France and Dan Henry will be lost to the squad next year, and these places will be hard ones for "Hank" to fill. He will have two stellar guards in Walt Spilman and Joe Rolinaitis. Captain-elect Maurice Steinhauer and Al Miller will be available at forward.

INTRAMURAL ATHLETICS

Kappa Delta Chi and Tau Kappa Epsilon shared the Intramural championship for 1930-31.

Tau Kappa Epsilon gained an early lead by winning the basketball championship, with the Delta Sigs second. Julie Resh proved that he was a superb pitcher by leading the Kappa Deltas to the indoor baseball championship. Delta Sigma Phi took second in both indoor and outdoor baseball, while the K. D.'s again have pitching to thank for the outdoor title. Kennedy and Russell did the mound duty, while Russell's heavy hitting was the feature of the race.

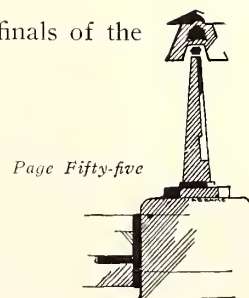
Working on an early lead, the K. D.'s added steadily to their total to win the track meet, with 78 points. Tau Kappa Epsilon was second, Sigma Alpha Epsilon, third, and Delta Sigma Phi, fourth. Dan Henry, Tau Kappa Epsilon, with three firsts and a second, was the individual champion of the meet, while Red Holmes and Dale Roberts of the Kappa Deltas were tied for second honors with 17 points each.

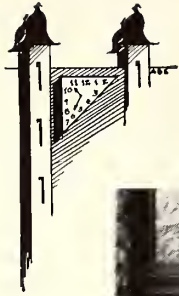
The Sig Alphas and the Tekes battled both tennis tournaments and horseshoe tournament to a finish, with the Tekes emerging with a tie in total points with the Kappa Deltas.

TENNIS

Co-captains Gene Wood and Cecil Rigg, Jimmie Dunning and Don Hannum formed the varsity team for last spring. Two conference matches were played, and were divided with Illinois College. In the district tournament at Millikin, Jimmie Dunning qualified for the state meet by defeating Sweet, of Normal, and Driver, of Wesleyan. At the state meet, he lost in the semi-finals, to the boy who later won the state championship.

Wood and Dunning lost to the Charleston doubles team in the finals of the Millikin district.





BASEBALL



Johnson, coach, Kennedy, Brummer, Mulligan, Griswold, manager
Tarro, Russell, Musso, Resh, Kirk
Thurau, Helm, Campbell, Smith

SCORES



"Hank" Gill

Millikin	4	Illinois College	6
Millikin	1	Wesleyan	6
Millikin	5	Charleston	2
Millikin	6	Wesleyan	5
Millikin	6	Charleston	2
Millikin	3	Illinois College	7



Leo Johnson

With the 1931 season cut to six games, the Blue started work under the coaching of Leo Johnson. There were two infield positions that had to be filled. These were handled by Homer Thurau and George Musso, at third and first respectively. Ken Kennedy, Allan Russell, and Orel Campbell took charge of the pitching duties, with Nick Tarro as the receiver. Charlie Smith and Stanley Helm worked the keystone positions of the diamond.

Julie Resh, Verle Kirk, and "Butch" Mulligan handled the outfield assignments.

Resh and Tarro led the hitting, while the long distance clouting of Thurau and Russell was outstanding. The team finished the season with a .500 average in the conference. Many practice games were played with industrial league teams in and about Decatur, of which Millikin won all but one. Resh and Smith were the departing seniors. Captain Tarro was reelected for the 1932 season.

WOMEN'S ATHLETICS



The battle of the century was on when Ruth Haas, captain of the sophomore team, and Bertha Nicholls, freshman captain, led their brave warriors in the annual Freshman-Sophomore Hockey Scrap Friday afternoon before Homecoming.

The contest was staged on the Millikin athletic field, and served as the opening event in the organized scrap of the freshman and sophomore men on the same field.

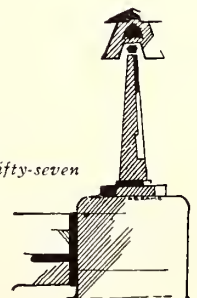
The sophomores, dressed in uniforms of blue, scored two goals to win over the first year girls, who were arrayed in the customary green. Bobbie Corder, women's athletic director, refereed the game.

The winning team was composed of Lois Sayre, Marcia Trout, Helen Bottrell, Madolyn Pygman, Elinor Pfeiffer, Jean Timm, Winifred White, Frances Sever, Alicia Skeet, Dorothea Sanner, and Captain Ruth Haas. Ruth Gregory and Dorothy Wehrman were substitutes who played and earned a part of the victory.

The freshman team included Arline Smith, Hazel Nichols, Bertha Nicholls, Miriam Nash, Rosemarie Maronto, Helen Newman, Ruth Helm, Doris Warren, Margaret Schiwek, Caroline Schwarm, Elma Dabler, and Maxine Beckhelm.



Bobbie Corder



WOMEN'S BASKETBALL



Sanner, Allen, VonLanken, Helm, Schiwek, Marshall, H. Nichols, Sullivan, Ma:onto

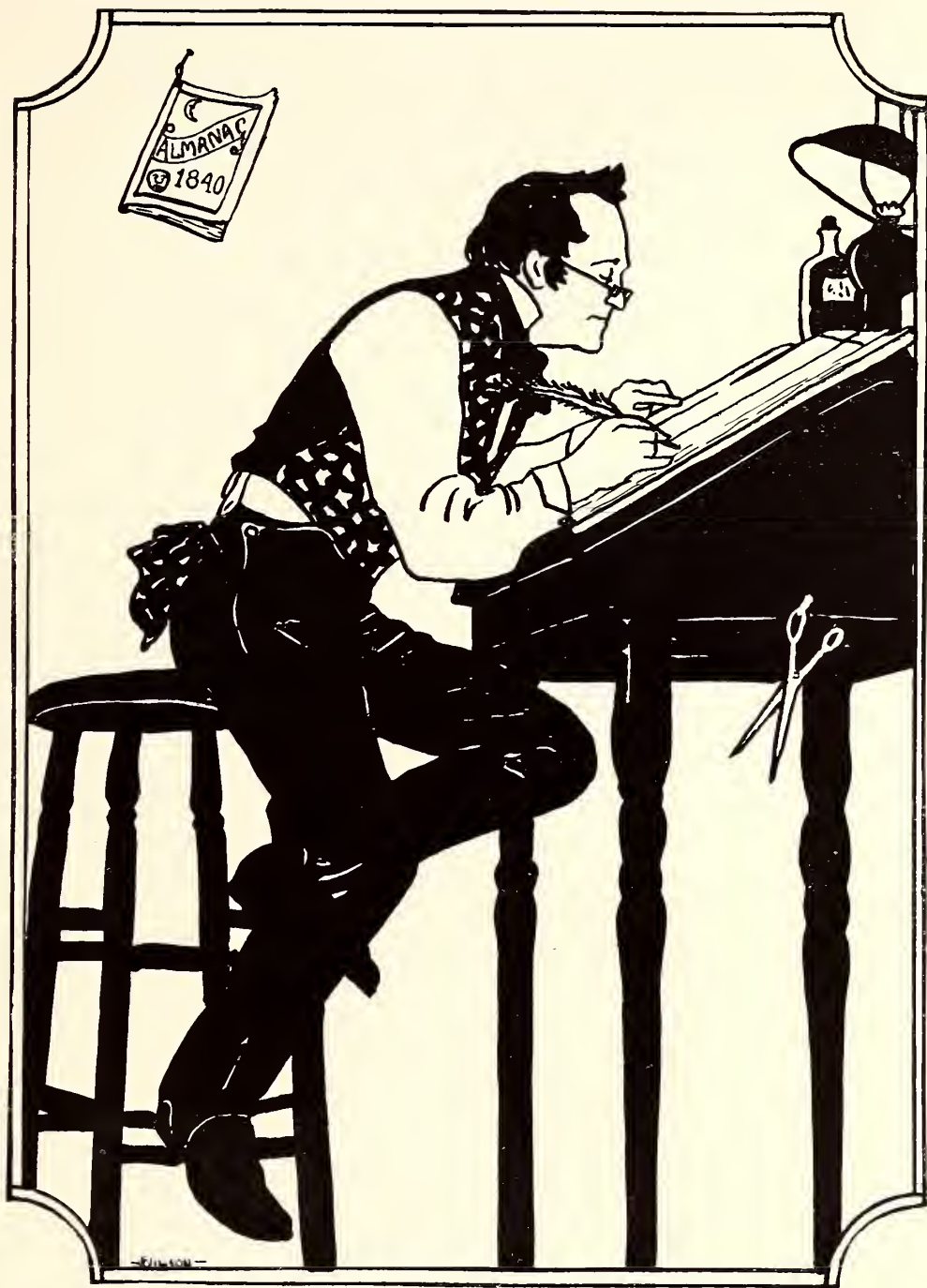
Competition was keen among campus organizations this year in the annual basketball tournament. The Independent team won the championship with six victories, scoring 209 points. Sigma Alpha Iota, with five victories and a single defeat, earned second place. Alpha Chi Omega and Theta Gamma won three and lost three games. Pi Beta Phi was fifth, with Delta Delta Delta, and Zeta Tau Alpha tied for sixth place.

Ruth Helm led the individual scoring with 84 points. Eva Marie VonLanken was second in total points with 52. Ruth Gregory, Sigma Alpha Iota, placed third with 37 points, while Hazel Nichols and Dorothea Sanner had 22 points each.

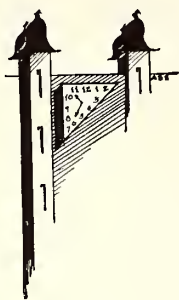
The Independent team played several games with outside teams, having unusual success.

W. A. A.

The Women's Athletic Association is in charge of all organized athletic activities of women on the campus. It plans the season's competitive games, and offers prizes for winners of the contests. The Women's State Tennis Meet is sponsored by W. A. A. Last year twelve colleges were represented. The guests are from Little 19 and Normal schools. Marcia Trout is president of this organization. Jean Timm is vice president; Winifred White, secretary-treasurer; and Ruth Haas is business manager.



Almanac



**The Most Certain, True, and Infallible Millidekian
Prognostication for the Year that is to Come, and as
Many Thereafter as You Please, By the Most
Ineffable Sage and Right Jolly Buster,
the Good Francois Rabelais**

Having well considered the heaven and all that's in it, at one time and another, I say that it's grossly exaggerated, and, for all I can tell, seems pretty much the same one time as another. As for the events, conditions, and circumstances of the year, history repeats itself, they say, and any awry-eyed sophomoric sniveler can see that one year follows rather closely upon another. Therefore, with this year well in mind, charily limned, flushed, swabbed, drawn, quartered, well aired and fumigated, sniffled at, shied at, sided at, snorted at, jittered at, gibbered at, faughed at, phewed at, claptrap, kitty cat, forked over, found amiss, in the balance, at the back-slide, down at the heel, down in the mouth, down in the back, behind our barn, out in the seat, off at a tangent, down in the mire, up in the air, up the creek, without a paddle, bruited about, scabrified, chaplified, pockified, hypockified, goon-ridden, deanified, white-washed and be-damned to it, I have set down here a chronicle of the year that's to come. So pull out your best eyes and wipe your noses, my little children, and heed every syllable of what I say, because there's no more to be known of these matters than what you're going to read here.

And if anything does not fall out as I would have it, why, that's no fault of mine; and it's so much the worse for you for being such a simple clod-pate duffer as to believe every tale that comes to your ears. And if you don't like what I say, you can go off and have kittens, bite your thumb, gnaw your nails, or just plain burp it—it's all one to me.

What's more I make no apologies for any calumnies, slanderies, plagueries, scurrilities, jocosities, or the like, that any sad grumble puppy may sniff out here, because I'm telling you right now that they weren't in here when this book went to the printer, and I think a nigger named Sam is at fault, the naughty deanbaiting fellow.

So fall to, you poor benighted punks, and see what I'm going to tell you, and don't forget that a little Early Riser at bedtime, will get even a pale polyp like you out for an eight o'clock.



Dances — Good Women

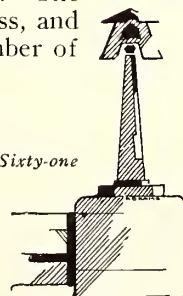
DANCES OF THE YEAR

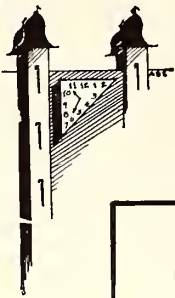
This year, the moon being in the ascendancy the greater part of the night, on sundry propitious occasions shall the merry Millikin mannikins and nannikins trip it at the terpsichore, which is to say, they shall trip it, slip it, whoop it, whop it, whip it, stomp it, sock it, drag it, rag it, shag it, rip it, snort it, shakit, shuffle it, terp it, muffle it, whirl it, hop it, trot it, jitter it, whisk it, frisk it, swank it, and so on until anon; such a hurly burly as was never seen since the Devil was a little boy. *Anerful* good time will be had by all, except a sad-eyed copper named Sam. Do I speak truth? Y'figger?

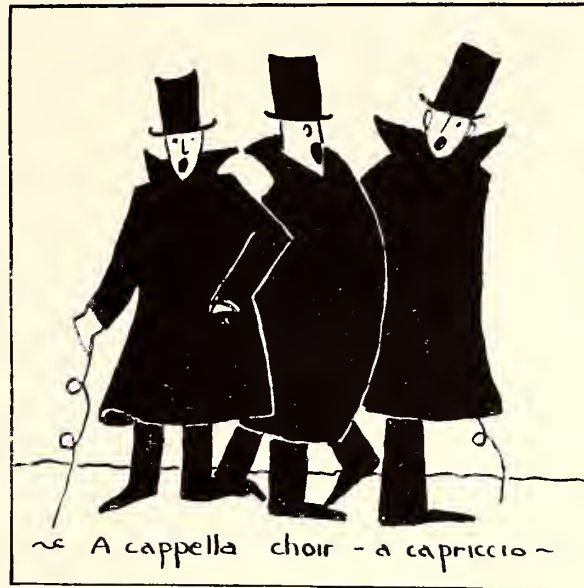
POLITICS OF THE YEAR

Politics shall this year be somewhat less, for the greater part, because of fewer students. Student Council, after all members have been appointed to their seats in that honorary poxed and palsied slumber society, shall resort to a sort of meeting called by Richard Kinnaman, to the end that Campus Politics shall be gutted, scraped clean, disinfected, and deodorized, in short, utterly purged of all recourse to peccant practice, foul connivance, nefarious traffic, and depraved higgling. The polluted political ring shall be completely glommed, blasted and legislated into the hereafter, to the accompaniment of much back-slapping, hand-shaking, and pious smacking of the lips.

As to class elections, the above-mentioned bush-monkey christers shall be somewhat non-plussed, at a loss, and taken aback, for the offices will be haggled over according to the custom and dealt from a cold deck by the wise guys. The class presidents will, of course, be the most popular members of each class, and at least one other student in the University shall be the most popular member of a class of his own.







SOCIAL NURTURE OF THE YEAR

Alphabet soup shall be much in evidence on aristocratic vest and dainty bosom, and whole reeking gobs of the stuff shall be crammed down some people's throats. The broth shall be somewhat thin and of a mildly intoxicating nature, leading male dupes of the cult to imagine themselves the irresistible doom of all femininity, and the subject of hushed twittering in the boudoir. The foul-brew shall cause the female counterparts to snitter and snagger and glitter and snigger at one another 'til their very bile shall curdle and some among them shall go about in public with a sort of jittering movement of the hips, if I may use the word.

Whole flocks and herds of sheep shall go to pot on Mondays, Tea on Thursdays, Chapel on Fridays. Otherwise Millikin shall be as nearly like 57 other Universities as a personal investigation can cheaply make it.

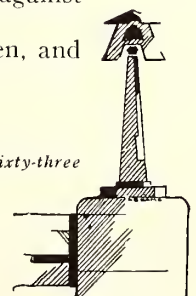
LOVES OF THE YEAR

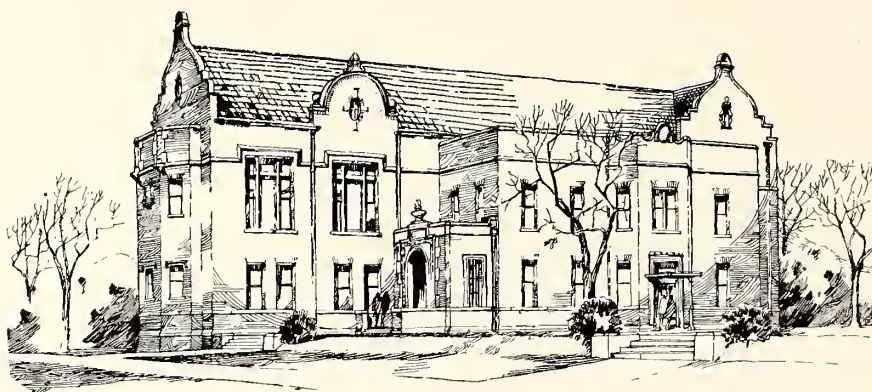
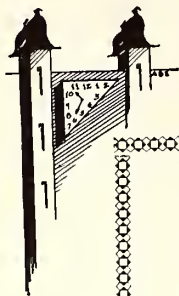
This year our two leading sexes shall flourish apace as is their wont, yet the loves of the year shall not be so many as what there used to be nowadays. For all that, full many a buck goof shall waste away as of a secret sorrow for the love of some enameled campus kitty. Frat pins shall shuttle hither and thither, amain and amok, and many fair bosoms shall flutter thereat.

Fraternity boys will constitute the chief source of amusement and entertainment to the women about the campus.

During the Spring Season blonde coeds, as well as dark ones, should beware of dark men; brunettes and light-complexioned women should guard against blonde men.

Men, for the most part, will do well to be on the lookout for women, and knowing this, those of the A cappella Choir go a capriccioso.





The Orville B. Gorin Library

A Gift of the Millikin Estate

ASCHAUER & WAGGONER,

Architects

Builders

COPE & FISHER

Contractors - Engineers

"A Decatur Institution Since 1884"

420 South Franklin Street

Decatur, Illinois



Moneylectomy!

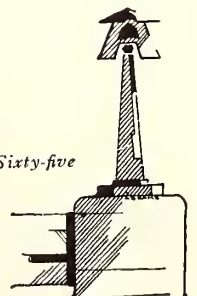
DISEASES OF THE YEAR

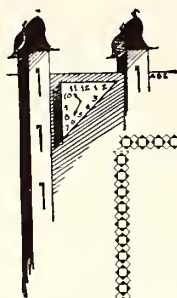
This year shall the well be in somewhat better condition than the sick, the blind shall not see very well, and the stone-deaf shall hear but scurvily. Rife and quite the nerts about the campus shall be appendicitis, which will give many a carefree campus kitty (the little witches) more stitches than one in the side, and something to gabble over in sorority meeting. As for measles, croup, and the prickly heat, these shall be confined to Aston Hall, where strepticcocic infection (sore throat, to you) shall cut a swath as well as among the faculty.

A malady most rampant, that dreadful, catching, most malignant and foul distemper against which there is no toxin, that disorder known as lack-o-money, shall this year ravage the campus. I quake for very fear when I think on't, for I assure you not very many of either of our leading sexes will escape this pocket-gripping disease. Wherefore shall Cal Dyer be most unhappy and develop a fiendish skill at the art of moneylectomy or turnip squeezing as the natives have it. In many a wit shall be cudgeled (of which may Welhung France be chiefest) and all the dumb clucks shall go ga-ga from too little practice at shut-eye.

Nevertheless, true sons of J. M. U., hailfellows well shellacked shall go it blind at the awry-eyed bust on run-boy-run red-eye, and whoop it up for Mamie Taylor; which will cause much twittering in the Deaneries. A lamentable epidemic of poesy shall afflict France, Rollins, and Rose Marie Maronto.

In consequence of the diseased condition of the institution, Dr. Bell shall speak out in Chapel concerning the advisability of good health.





Compliments of

DR. R. ZINK SANDERS

Buy Decatur Mined Coal and Add to the Community
Buying Power

MACON COUNTY COAL CO.

Telephone 4444

UNION DAIRY

MEADOW GOLD DAIRY PRODUCTS

Decatur's Modern Milk Plant

VISITORS WELCOME

304 South Main Street

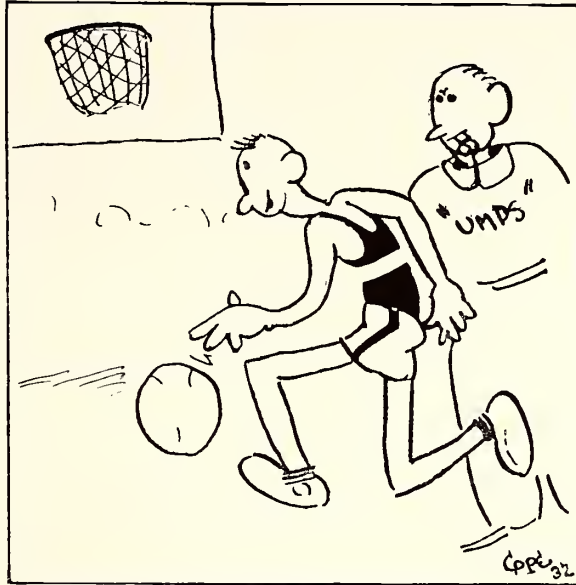
Phone 5241

THE DECATUR LUMBER CO.

Manufacturers of

FINE WOODWORK FOR HOMES

Norih Water Street at the Wabash Railroad



Basketball

ATHLETICS

September 27 to November 21. The ascendancy of Leo, during which time several total eclipses will be visible on the Millikin athletic field, namely those of Scott Field, Crane, Charleston, Elmhurst. The annual Wesleyan eclipse will also be seen locally during that period. Football uniforms, as worn by the well-dressed gridder, shall consist of blue knit jerseys trimmed in white, on the back of which shall appear a number. "29" shall be a favorite this year. The trousers shall be of a heavy khaki material. Headwear should consist of a leather derby, sans brim, with earmuffs attached.

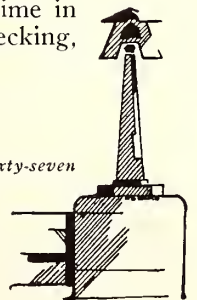
The students will also play at whiffle-board, nickel-in-the-slot, the-eight-o'clock-sprint, the-chronic-mooch.

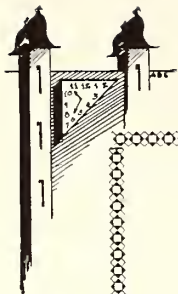
During the Spring Season the track team shall hitch-hike it to the Drake Relays where he will jump over your head.

The Millikin baseball team will not be defeated once, but for all that Leo will gripe and snort like a whelp lion with colic.

ENROLLMENT

A partial eclipse in the student enrollment will occur in September, to be followed by neap tide in February. The Keeper of the Sacred Roll and ballyhoo man will loathfully admit a decline in the registration, although his earlier prognostication will have been filled with much optimism and prevarication. May he henceforth despair of concert tours and illustrated lectures as a means of swelling the student body. It will be the duty of the three hundred and fifty-two students to get along as best they can. In doing so they will pass their time in griping, necking, and dancing; in dancing, griping, and necking; and in necking, griping and dancing.





Decatur's Largest and Smartest Millinery Department

Big Line of Useful Styles, \$1.79 and Up

JOSEPHINE SLATTERY, MILLINERY

With Stewart Dry Goods Company, Inc.

For 25 Years Most of Millikin's
Better-dressed Men Have Worn
KAUFMAN'S CLOTHES

KAUFMAN'S

245 North Water Street

Shoes Mark the Individual

for

SPORT

GOLF

DRESS

FORMAL

\$2.98 and \$3.98

10% Discount to Millikin Students



403 North Water Street



Death of The Decaturian

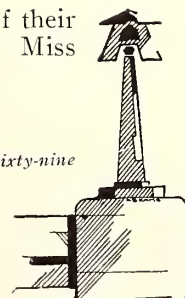
FACULTY

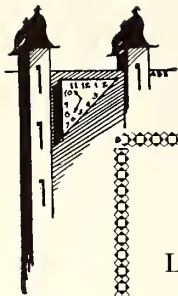
In general the faculty will wax and wane in regular order. Someone in Dean O'Hara's office will continue to make an ass of himself, though a somewhat greater one than heretofore. If any of ye find need of adjustment, we recommend the revival meetings of Rev. J. A. Melrose, which will take place in a nearby temple of worship. The ephemeral and ill-fated Decaturian will make interesting disclosures of the past histories of certain instructors. Prof. Warner, we shall find, "takes an interest in a variety of things." This man will be revealed as the former croquet champion of Ohio. Prof. MacGregor, the Decaturian will say, was a former expert on Gas Defense. The students of this learned man will need to develop considerable expertness in the same direction. Mr. MacGregor's hobby is reading books.

LIBRARY

After much procrastination, and with undue claptrap, bombast, ceremony, and flapdoodle, the O. B. Gorin Library Building will be dedicated on November the twentieth, with Taurus, the Bull, in ascendancy. The humble students and townspeople will be allowed to tour the empty book-shelves, and gape at the luxurious reading room and void seminars. A browsing room will be found, but, my friends, there will be no browsing for some time to come, and then all books and periodicals will be in glass cases. So wild and exciting will this dedicatory festival be, that Empress Eugenia, guardian of the Sacred Books, will be unable to attend the part of Cerberus on the following day.

So fain will the students be to be at their books, that in consideration of their health, students will be barred from the stacks, for fear of falling books. Miss Allin will be glad to pick out a nice book for anyone who looks honest.





R. I. HALL — BARBER SHOP

HAIR CUT, 25c—SHAVE, 20c

Ladies' and Children's Hair Bobbing *Your Patronage Appreciated*
222 So. Oakland Ave., Decatur, Ill.

B. B. Burns, Pres. and Treas. Telephones 4218-4219 E. C. Stivers, Secy.

J. G. STARR & SON, INC.

Authorized Dealers
HUDSON CHRYSLER
ESSEX PLYMOUTH
349-385 E. Prairie Street

Expert Service and Repairs
on All Makes
of Cars
Decatur, Illinois

RAYCRAFT DRUG CO.

We Deliver

DRUGS
CIGARS

SUNDRIES
SODAS

DOBBS HATS

STETSON HATS

The Newest in Collegiate Apparel

Roxburn and Hart, Schaffner & Marx College Clothes

"THE COLLEGE SHOP"

DROBISCH-KEISER COMPANY

129 N. Water Street

PARLOR MARKET

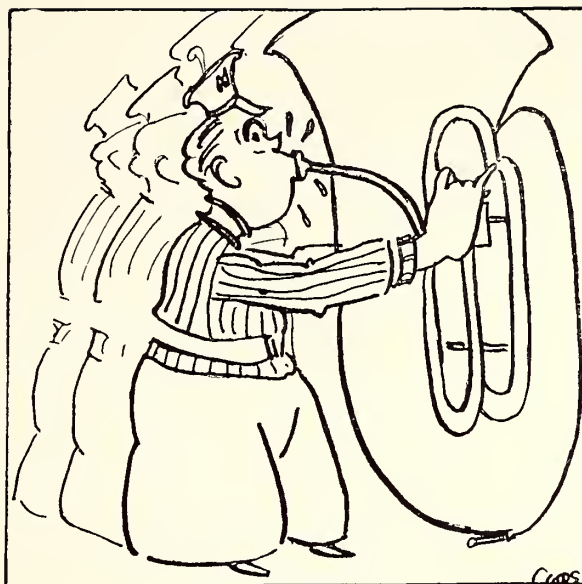
F. N. GOODMAN & CO.

Quality Meats and Produce

With Service

Three Phones 5245

West Side Square



Band

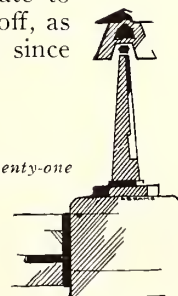
SCHOLARSHIP

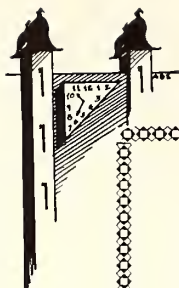
This year shall scholarship be rather poor, so to speak, because of prevailing westerlies and low grades. Grades, for the most part, will be on the wane, Pisces, the Flunk, having the ascendancy. Downright dullness, out-and-out simplicity and uninspired nincompoopery will also bear somewhat on these matters, most students varying only in manner of stupidity.

On the other hand, as it were, not all ascetic devotion to the written word and ardent courtship of the little gold key of scholarship shall utterly have come to pass away. Some few shall hold body and soul together by intellectual nurture and philosophical reflection.

REBELLIONS OF THE YEAR

The biggest rebellion of the year will be the Philosopher's Rebellion, the faculty being on the wane and the coffers full empty. It will be accompanied by hot air and much driveling in the west portions. Its inception shall be thus: That a certain young boy-philosopher, of an aimless bent of mind, and of surreptitious habit, shall find himself, once on a day, with enough dynamite, gun-cotton, T. N. T., caps, fire-crackers, pin-wheels, roman-candles, pure smokeless gunpowder, and such combustibles, in his head, almost to the exclusion of all else, and in quantity sufficient to blow the whole institution out of its cosmic setting. He shall stir his bones and gad about, conniving and conspiring, scheming and snorting like a good chap, and will make more violent noise than the sourest band. But, not having read his almanak, consulted the zodiak, studied the heaven-decreed augurs, and invoked the lucky number of the year, he shall not calculate on the influence of a Star which will rise from the South of Main-street in the vicinity of the Sig Alf house. In consequence our poor lack-wit philosopher shall find himself with scarcely enough powder under his pate to blow his nose vigorously. Nevertheless, he will manage to blow his face off, as will several others, high up and low down, such a sight as was never seen since Miss Allin rode a bicycle down the front corridor.





“KEEP FIT THIS SUMMER”

And Enjoy Your Vacation

Spaulding and Burke
GOLF
EQUIPMENT

Johnson
BOATS
AND MOTORS

Spaulding and Wilson
TENNIS
EQUIPMENT

CLUBS
BAGS
TEES
BALLS

*Enjoy Lake Decatur
with a Johnson
Boat and
Motor*

NETS
BALLS
SHOES
RACKETS

HATS
HOSE
SHOES
KNICKERS
and Other Accessories

BRADLEY
BATHING
SUITS

PRESSES
MARKERS
TROUSERS
SUN SHADES
and Other Accessories

MOREHOUSE & WELLS CO.

New Citizens Building

Sporting Goods Department

THESE FIRMS BOOST MILLIKIN AT DECATUR:

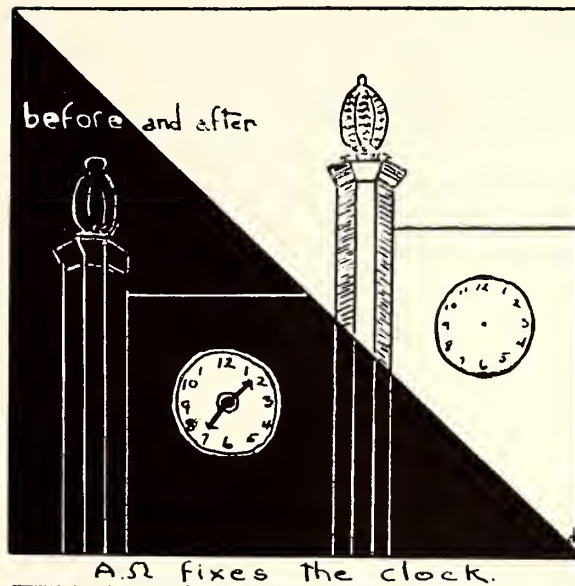
Landon Hardware Co.

Raffington Drug Co.

West End Shoe Service

Pfile's Camera Shop

South Oakland Barber Shop



HOMEcoming

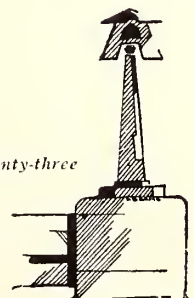
Homecoming, which shall this year fall on the first Friday and Saturday following the full moon in October, will be accompanied by a wet spell. Dean O'Hara had better get a raincoat for the occasion. Homecoming spirits shall prevail, with a bellicose turn of affairs at the dance, in which two stars shall figure.

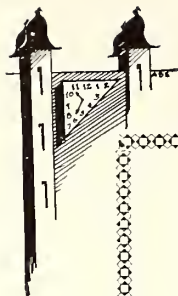
At the proper time Leo will make the speech for which he is notorious.

Alpha Omega will announce that there will probably be no freshman-sophomore scrap, that it will not be on the front campus, and anyway Alpha Omega will stop it within a few minutes after it begins. The scrap will be on the front campus, which will dampen the Dean's allegresse (coat-tails to you). This sacred and traditional skirmish will be held under the patronage of Aquarius.



Chapel Talks





Compliments of

JOHN F. SCHUDEL

PUBLIX

Lincoln and Empress Theatres

present

THE UTMOST IN MOTION PICTURE PRODUCT

Take advantage of the new reduced prices

Visit Our Toilet Goods Department

Toiletries by

Coty—

Yardley—

Hudnut—

Bourjois—

Harriet Hubbard Ayer

IRWIN-COZAD DRUG CO.

101 E. PRAIRIE ST.

DECATUR, ILLINOIS

Appearance is Important

PARTELOW BEAUTY SHOPPE

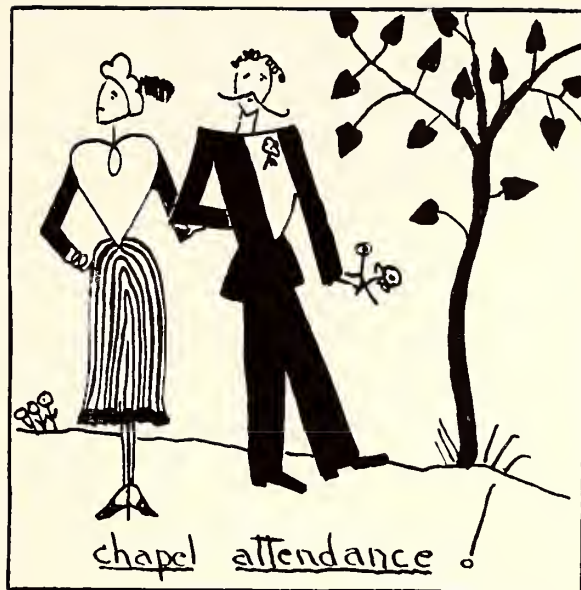
EUGENE PERMANENT WAVING

Call for Appointments

Phone 6529

122 So. Oakland Ave.

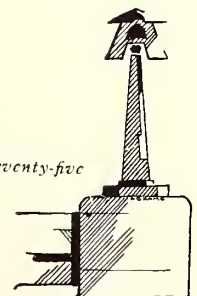
Decatur, Illinois

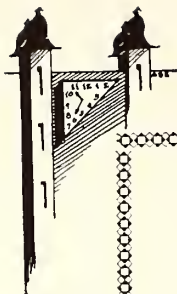


CHAPELS OF THE YEAR

Chapel shall this year be incurable, for the most part, though during the early ascendancy of Saturn, the speaker shall have to visit the Corner in order to address the students. Shortly thereafter, Jupiter being in the retrograde or thereabouts, the administration shall come out downright square upon the business without beating about the bush with frivolous circumstances and unnecessary reservations; they shall, I say, blurt it to an unflinching policy. Ah, yes. Thence, forward into the hereafter a student finding it necessary to be absent from any assembly shall present to the Dean before the next assembly a satisfactory written excuse for his absence. In no case may excused absences exceed three in a given semester except for most urgent reasons.

The breaking of this part of the rule shall subject the offending student to drastic discipline and possible suspension by the thumbs. After several students have been drastically disciplined in the stocks before the chapel doors, attendance shall be regular and enthusiastic. Ah, yes. The talks this year shall be of rare quality, the subjects ranging from Campus Etiquette to the Wonders of Modern Science.





QUALITY



MEATS

27 Markets
In Central Illinois

PATRONIZE
OUR
ADVERTISERS

Sodas

P
H
O
N
E

4
7
6
1

Sandwiches

The

Pom

Pom

Sundaes

W
E

D
E
L
I
V
E
R

Dinners

YOU GET AN EDUCATION WITH YOUR DEGREE *at*
MILLIKIN

YOU GET FASHION-RIGHTNESS AND QUALITY WITH
YOUR MONEY *at*
GUSHARD'S

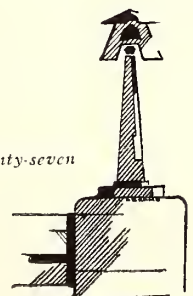
SPECIAL ATTENTION GIVEN TO COLLEGE STYLES
DRESSES, SUITS AND COATS FOR ALL OCCASIONS

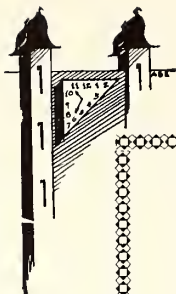


Graduation — Thank God!

LAWS OF ETIQUETTE

All laws shall sometimes be obeyed this year, for fear of consequences; hats shall not be worn in the building, for fear of thieving visitors; cigarets shall not be smoked on the campus, for fear of snipes; girls shall not wear short sleeves or go about without hose, for fear of bareskin; flannel petticoats shall not be discarded 'til school's out for fear of exposure; whistling shall not be in the corridors, for fear of waking the faculty; no uncouth, boisterous language shall be on the campus, for fear of hell; late dates shall not be on the campus, for fear of the men; no scratchy note-books shall be in the library, for fear of Miss Allin's finish; no cars shall be parked on the front drive, for fear of Dr. White; no scrap shall be on the front campus, for fear of Alpha Omega's big stick; no one shall gambol on the green, for fear of the grass; no one shall cheer the team, for fear of noise; no one shall prank it at the dinfredaddle, for fear of the Deaneries; no one shall go to chapel for lack of something better to do; no one shall fail being a pious snifle-puppy, for lack of supervision; no one shall fail being a lunk-head heel, a slobgobbering goon, for lack of encouragement; no one shall go to the dogs, for lack of rules; no one shall be at a loss, for an alibi.





HOSIERY BY NEUMODE

A Color
for Every
Costume

A Hue
for Every
Shoe

NEUMODE HOSIERY SHOP

117 North Water Street

Compliments of

FLINT, EATON & COMPANY

Pharmaceutical Chemists

148-152 N. FRANKLIN ST.

DECATUR, ILLINOIS

Students are Invited to Visit Our Laboratories

THE COLLEGE SUPPLY STORE

Owned and Operated

by

THE UNIVERSITY

—carries a complete line of books, stationery, pens and pencils. We are always pleased to aid the student in making his or . . her . . selection.

We ask the co-operation of the Millikin students to aid us with our task of furnishing their needs at the lowest prices.

We Appreciate Your Business
PECK'S WANDER INN

It Pays to Look Well!

THE MARTHA METHOD OF STEAM WAVING
NESTLE CIRCULINE PERMANENTS *and* REALISTIC WAVES
THE MARTHA BEAUTY SHOPPE

325 So. Oakland Ave.

Phone 6671

Decatur, Illinois

Compliments of
DAWSON & WIKOFF
Funeral Directors

COMPLETE MOTOR EQUIPMENT — TWO MOTOR AMBULANCES

Phone 4421

Corner Wood and College Streets

Decatur, Illinois

Established 1879

RICHMAN'S CLOTHES
All \$20.00

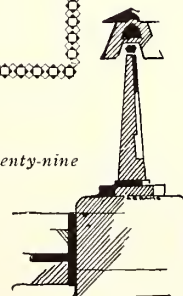
Made in our own factory and sold through our own stores. We save
you the middleman's profit.

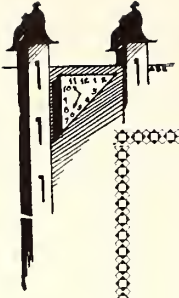
RICHMAN BROS. CO.
207 NORTH WATER STREET

We appreciate the patronage of the classes and the societies of Millikin,
and wish to announce that our future price for the Elks Club House
will be \$25.00 to them.

THE ELKS CLUB OF DECATUR

Are You a D. D.?





There comes the time when every
good earner realizes that the *bank
book* is mightier than the *pay
check*.

The National Bank of Decatur

"Decatur's Oldest National Bank"

Decatur, Illinois

UNION IRON WORKS

Manufacturers

WESTERN

Shellers and Cleaners

ELEVATING, CONVEYING AND POWER TRANSMITTING
MACHINERY

Decatur,

Illinois

Compliments of

"BLUE MILL TEA ROOM"

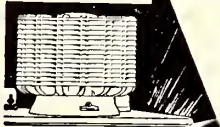
"AT THE CORNER"

"Where Millikin Students Meet and Eat"

"Afford one!"

2% MONITOR TOP
SAVES YOU MONEY

*Before you buy
know why!*



Why... *our*
General Electric Refrigerator
saves us money every day!"

*It is true economy to own the
Refrigerator with the Monitor Top*

AFFORD one! Ask any of your friends who has *bought* one. General Electric Refrigerators actually *save* money. They run at a cost of a few cents a day. The efficiency of the Monitor Top, with its hermetically sealed mechanism, sees to *that*.

And your milk and meat and fruit and vegetables that would spoil in a temperature less cold, are kept fresh and wholesome. So you save there, too! The dependability of the Monitor Top sees to *that*.

If you are thinking of expense—buy the refrigerator with the Monitor Top—the General Electric. Very little cash is required to buy one. Our easy time payment plan sees to *that*.



GENERAL  ELECTRIC
ALL-STEEL REFRIGERATOR

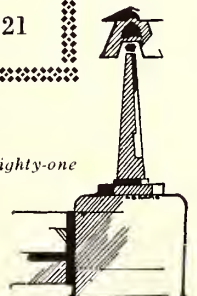
ELECTRIC WATER COOLERS • COMMERCIAL REFRIGERATORS • ELECTRIC MILK COOLERS

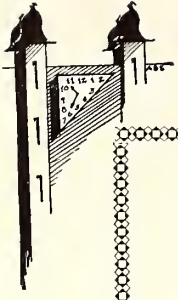
**Illinois
Power and Light
Corporation**

124 South Water Street

Phone 4121

Page Eighty-one





THESE COMPANIES HAVE THE INTEREST
OF THE UNIVERSITY AT HEART.
MAY THEY ALWAYS PROSPER:

Wm. Gushard Co.

Linn & Scruggs Co.

Block & Kuhl Co.

H. S. Gebhart Co.

Decatur Dry Goods Co.

Sears, Roebuck & Co.

Montgomery Ward & Co.

Stewart Dry Goods Co.

J. C. Penney Co.

Decatur Assn. of Commerce

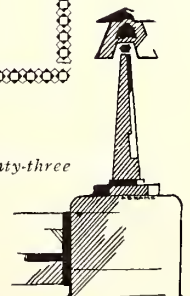
Oldest, Largest Decatur Bank

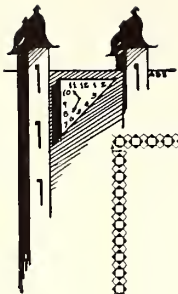
THE
MILLIKIN NATIONAL BANK

Founded A. D. 1860
by
JAMES MILLIKIN



Every Banking Facility Afforded
Savings Department Pays Interest of 3% a Year—
Compounded Semi-Annually
SAVE AND HAVE
Everybody Welcome





“A Blend from the *Old South*—this *Golden Syrup*”



BILL HEER

Staley's Master Blender

For 47 years Bill Heer has blended and tested syrup flavors. Every batch of Staley's Syrup must pass the test of his educated palate at each step in its making.

Staley's GOLDEN Syrup comes in the BLUE can



3 other
delicious flavors
MAPLE FLAVORED
(*green label*)
CRYSTAL WHITE
(*red label*)
SORGHUM FLAVORED
(*brown label*)

“FOLKS certainly enjoy this mellow Golden syrup of ours, judging by the way they order it over and over again,” says Bill Heer. “It’s a blend I learned in the Old South nearly forty years ago — flavored with premium grade syrup from the first run of the best cane sugar refineries.” Serve it with waffles, pancakes or hot breads. Delicious—and so inexpensive! Write for our free recipe book.

STALEY SALES CORPORATION

Decatur, Ill.

Staley's Syrups



Your Next Ten Years

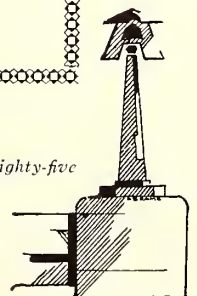
How much will you be worth to yourself in 1942? Collect the dividend on ten years of brain and brawn that will have gone into your work. Deposit it in your savings account and build up your income.

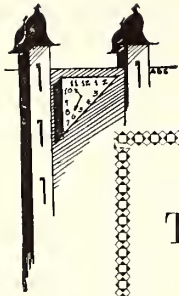
The next ten years should mean great things for you: Savings . . Investments . . Financial Independence! You can make certain of them.

Some day you *must* save. The sooner you begin the better it will be for *you*. The best time to make your start is right now—*today*. Open a savings account in this bank.

The Citizens National Bank

North Side Central Park





The Photographs in the Millidek of 1932 Were
All Taken Especially by Us for the Book

We wish to thank all the students and
patrons for their splendid co-operation
in making the Millidek of 1932 a pic-
torial success.



LINDQUIST STUDIOS

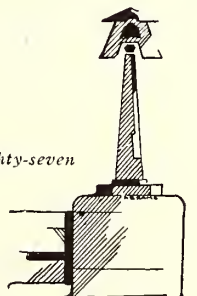
Official Photographer for the Millidek of 1932

319 North Water Street

Decatur, Illinois

OUR BOOSTERS

Roth Johnson Drug Co.
 Martha Washington Candies
 Imogene Hoff H.M. Rogers
 June Bilger & Earl's Billiard Parlor
 Delores Bilger M. P. Ducatus Maid
 Suzanne Bilger
 Orlando G. Kuhl
 Greenberg's Shoes
 Martin Jewelry Co.
 P. G. Schnell
 Myer & Son
 Illinois Cleaners. Est. Dachrach
 Fields Apparel Section with Stevarts
 The Shewen-Williams Co.
 Decatur's Bowling Parlor.





HERALD
PRINTING
AND
STATIONERY
CO.
DESIGNER ILLUSTRATOR

